

**National Estuary Program Funding**  
**Narragansett Bay Estuary Program**  
**FY2023 Annual Workplan for §320 and SNEP Funds**

---

<b>Applicant:</b>	Roger Williams University
<b>Applicant Contact:</b>	Mike Gerel Narragansett Bay Estuary Program 235 Promenade Street – Suite 393 Providence, Rhode Island 02908 (804) 332-1197 <a href="mailto:mike.gerel@nbep.org">mike.gerel@nbep.org</a>
<b>USEPA Region 1 Project Officer:</b>	Caitlyn Whittle U.S. Environmental Protection Agency—Region 1 5 Post Office Square, Suite 100 (OEP06-1) Boston, MA 02109-3912 (617) 918-1748 <a href="mailto:whittle.caitlyn@epa.gov">whittle.caitlyn@epa.gov</a>
<b>QA/QC Plan Required:</b>	Yes
<b>Project Period:</b>	October 1, 2023 – September 30, 2026
<b>Resources Requested:</b>	This is a new award. Total budget is \$2,200,000 (FY2022 funds and required non-federal match). Attachment A provides the FY2023 budget summary and itemized budget for this award.
<b>Federal Cost:</b>	Current request: \$1,100,000 (FY2023 funds)
<b>Non-Federal Match:</b>	The attached match documentation includes \$1,100,000 received from various partners for FY2023.
<b>Abstract:</b>	This <a href="#">Narragansett Bay Estuary Program</a> (NBEP or program) Narrative Workplan (workplan) includes 4 objectives and 17 tasks that will be undertaken with this FY2023 allocation of <a href="#">Clean Water Act §320</a> and <a href="#">Southeast New England Program</a> (“Base” funding) from the U.S. Environmental Protection Agency (EPA) to its host, Roger Williams University (RWU). The agreement has a three-year project period (October 1, 2023 – September 2026). This annual NBEP Base Workplan for FY2023 includes efforts that the program has the authority, capability, and funding to complete, have support by the NBEP <a href="#">Steering Committee</a> , and are intended to advance NBEP’s <a href="#">Comprehensive Conservation and Management Plan</a> (CCMP) for the program’s <a href="#">Study Area</a> of Narragansett Bay, Little Narragansett Bay, and Coastal Ponds, and their watersheds in Rhode Island, Massachusetts, and Connecticut.

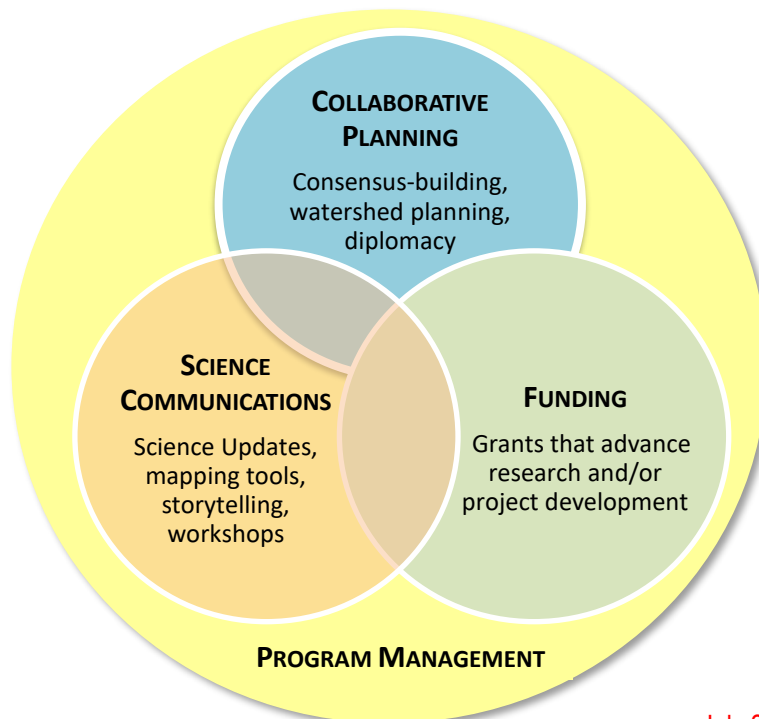
## I. OBJECTIVES

This work plan includes four objectives that align with NBEP’s mission, CCMP, services, and funding requirements. The objectives are grouped by NBEP’s core services: (1) Program Management; (2) Collaborative Planning; (3) Science Communications; and (4) Partner Funding. The CCMP objectives addressed in this workplan are listed for each NBEP objective. Each NBEP objective includes specific tasks, with target completion dates and expected outputs and outcomes.

**Summary of FY2023 NBEP Base Workplan Objectives and Tasks**

Objective	Task
1. Ensure sound <b>program management</b> consistent with NBEP’s mission, bylaws, and CCMP.	a. Program Leadership.
	b. Host Institution Program Support.
	c. Base Workplan and Budget Development.
	d. Committee Support.
	e. Subaward and Contract Management.
	f. Land Acknowledgment Development.
	g. Grant Writing.
2. Provide <b>collaborative regional planning</b> to advance more resilient, sustainable, and equitable natural resource management, use, and enjoyment.	a. Vision 2032 Completion.
	b. Science Working Group Convening.
	c. Regional Research, Restoration, Monitoring, Financial, & Outreach Planning.
	d. Southeast New England Program Support.
3. <b>Communicate science</b> in ways that is understood and useful to researchers, managers, other priority audiences.	a. Science Updates.
	b. Annual Science Event.
	c. Targeted Outreach.
4. <b>Award funding</b> to partners to help implement the CCMP.	a. Small Education and Outreach Subawards.
	b. RIDEM Fish & Wildlife Ecological Data Analyst Subaward.
	c. RINHS Biodiversity Database Subaward.

### NBPE Core Services



## **Objective 1: Ensure sound program management consistent with NBEP's mission, bylaws, and CCMP.**

### Primary 2012 CCMP Objectives Addressed:

- This objective supports all 24 CCMP objectives.

### **Task 1a: Program Leadership**

The Executive Director and delegated NBEP staff will work with the Steering Committee, the [Executive Committee](#), and other committees to assure sound governance, performance, and standing of NBEP. This will be accomplished by (1) ensuring work is consistent with grant agreements, the NBEP's [bylaws](#), current CCMP, and annual workplans and amendments; (2) assuring an approach that is science-based, collaborative, community-driven, and otherwise consistent with the National Estuary Program (NEP) model; (3) maintaining relationships, pursuing new partnerships, and representing NBEP in appropriate forums to optimize awareness of NBEP's unique role and value; (4) EPA cooperative agreement and re-granting oversight, progress tracking, and reporting; (5) providing day-to-day management of the NBEP office, including direct supervision of staff and interns, collaborating with the host institution on staff and intern hiring and performance reviews, development of staff and intern work plans, and ongoing mentoring; and (6) elevating and amplifying diversity, equity, inclusion, and justice consistent with NBEP's [2022 DEIJ Assessment](#). Note that NBEP plans to hire an Ecologist in by January 2024 with \$320 funds to broaden our technical expertise to fill gaps in the region by helping to implement Tasks 1e, 2a, 2b, 2c, 3a, 4b, and 4c. Through these responsibilities, the Executive Director assures delivery of additive, actionable information, tools, and funding that advances water quality, wildlife, and quality of life in the Study Area. Task 1a will be accomplished via personnel time of NBEP staff.

### **Task 1b: Host Institution Program Support**

RWU will support NBEP by providing specific services that enable the program to employ quality staff, meet a high standard of financial management, and otherwise operate consistent with legal requirements, NBEP's bylaws, and annual workplan. This will be accomplished by (1) employing all NBEP staff and RWU student interns; (2) overseeing staff hiring and performance review; (3) serving as the program's fiscal sponsor; (4) formally applying for, accepting, and distributing public and private funding on behalf of the program; (5) developing contracts, subawards, and attendant documentation (including those funded using BIL funding); (6) establishing and managing NBEP office space agreement; (7) submitting required reports to funders; (8) support joint NBEP/RWU communications and events as appropriate; and (9) coordinating with the Executive Director and EPA as needed. Task 1b will be accomplished through personnel time of RWU staff.

### **Task 1c: Work Plan and Budget Development and Tracking**

The Executive Director will develop workplans and budgets for review by the NBEP Executive Committee and approval by the NBEP Steering Committee in June each year. RWU will complete a final annual grant application for submission to EPA in July each year. For FY2023 NBEP will complete one set of materials for Base funding (the [FY2022-FY2023 BIL Workplan](#) was developed and approved by the Steering Committee last year). The Executive Director and RWU will collaborate to track and report progress toward completion of workplan tasks consistent with funder requirements, and as otherwise requested by the Steering Committee or EPA. Task 1c will be accomplished with personnel time of NBEP and RWU staff.

### **Task 1d: Committee Support**

NBEP is guided by three standing committees: Steering Committee, Executive Committee, and [Science Advisory Committee](#). Presently there are also three subcommittees: Vision 2032, Grants, and Nominating. The Steering and Executive Committees meet quarterly, and the Science Advisory Committee three times a year. The Executive Director in collaboration with the committee Chairs, lead the Steering and Executive Committees, while the Staff Scientist with the committee Chair(s) lead the Science Advisory Committee. Refinement of the Science Advisory Committees priority roles and framework consistent with NBEP's bylaws will be explored into FY2023 to assure best of the committee in advancing the CCMP and regional science. NBEP leads schedule meetings; develop agendas, program reports, and recommendations for consideration; recruit speakers; conduct meetings; draft notes; and post meeting materials publicly as appropriate. Meetings are designed to inform members, seek their expertise and approval of staff recommendations per NBEP bylaws, facilitate member coordination and relationships, and engagement with stakeholders as appropriate. NBEP proposes to provide meals, in this case a light lunch, for all quarterly Steering Committee meetings, and up to the equivalent of four other meetings, held during normal business hours to enable longer meetings, encourage active participation, and acknowledge

the considerable commitment people make as a member of these committees (Steering Committee meetings: approximate cost per person \$15; anticipated attendance 30; total cost per meeting: \$450; total cost for the equivalent of 8 meetings: \$3,600). Further, community engagement contracts (up to \$650/day) may also be provided to compensate non-committee members who attend to offer presentations, public comment, or otherwise provide their expertise and life experience. Task 1d will be accomplished through personnel time of NBEP staff, meals, and community engagement contracts.

**Task 1e: Subaward and Contract Management**

NBEP will distribute 60% of its total funding to external parties for the FY2018 to FY2023 period. The program expects to have over 30 active subawards and contracts during FY2023. These numbers include those funded with Bipartisan Infrastructure Law (BIL) monies, which will be managed under this Base award. Some of these awards are highlighted [here](#). Management of these awards is currently spread across three staff and includes collaboration with RWU on scope, budget, and agreement development, review and approval of quarterly reports and invoices, processing of amendments, and routine interaction with EPA, RWU, and awardees. Because oversight of these awards now takes considerable time, this work is called out as a separate task in this workplan. Task 1e is completed through personnel time of NBEP staff.

**Task 1f: Land Acknowledgment Development**

Indigenous people have occupied NBEP’s study area since time immemorial. First people’s homelands in the region include the Eastern Nehantick, Mohegan, Narragansett, Nipmuc, Pequot, Pokanoket, Wampanoag, and perhaps others. Land Acknowledgments are completed to recognize the traditional land stewardship, contributions, and continuation of these people. NBEP intends to create a Land Acknowledgement that recognize that indigenous voices are still here and document the program’s commitment to working with them as equals to attain shared goals. The program intends to partner with indigenous people, scholars, and others to authentically and respectfully develop a Land Acknowledgement consistent with the insights of Loren Spears of the Tomaquag Museum found [here](#). Work will be coordinated with RWU administration, as well as faculty with expertise in the area. This task was included in the FY2022 Workplan but was delayed until FY2023. Task 1e will be accomplished through personnel time of NBEP staff and interns, community engagement contracts, and a consultant contract, the later funded by remaining FY2022 funds.

**Task 1g: Grant Writing**

NBEP staff will develop up to two (2) proposals independently or with partners to augment and diversify program funding each fiscal year. Proposals will be developed, submitted, and any awards administered in compliance with the NBEP’s bylaws, EPA’s [FY2021-FY2024 Clean Water Act §320 National Estuary Program Funding Guidance](#) (Funding Guidance) dated October 13, 2020, and [OMB’s Uniform Guidance](#). NBEP will explore a range of grant opportunities, update the Executive and Steering Committee on prospects, and draft proposals. RWU will submit proposals and administer any awarded funds. The finance plan described in Task 2c will guide whether NBEP pursues grant writing or other fundraising for internal purposes and/or to help implement the CCMP. NBEP staff may also provide letters of support for partner proposals that are consistent with the CCMP. Task 1f will be accomplished via personnel time of NBEP staff.

**FY2023 Tasks, Completion Dates, Outputs, and Outcomes**

Task and Staff Leads	Completion Date	Outputs	Outcome
<b>Task 1a: NBEP Program Leadership</b> (Executive Director)	Ongoing	Oversee implementation of NBEP annual and staff workplans and amendments. Maintain relationships with up to 500 existing partners. Develop 30 new partners. Represent NBEP in at least 5 forums. Collaborate with the host institution on hiring a new Ecologist, RWU interns, and completing performance reviews. Compile and submit 1 NBEP annual report and 1 NEPORT report to EPA. Travel for meetings.	Administrative and programmatic performance, reputation, and morale is such that NBEPs mission and CCMP are advanced.

**FY2023 Tasks, Completion Dates, Outputs, and Outcomes**

<b>Task and Staff Leads</b>	<b>Completion Date</b>	<b>Outputs</b>	<b>Outcome</b>
<p><b>Task 1b: RWU Program Support</b> (RWU Associate Provost for Global and Community Engagement, RWU Research and Sponsored Programs, RWU Finance, RWU Office of General Counsel)</p>	Ongoing	<p>Develop and submit EPA Base Cooperative Agreement application and amendments to Base and BIL agreements as needed.</p> <p>Oversee staff hiring and performance review.</p> <p>Submit up to 2 other proposals.</p> <p>Submit NBEP reports, close-out documents, and other paperwork as required.</p> <p>Accept funding, execute contract and subaward paperwork, and pay invoices.</p>	<p>Program operations are efficient and effective such that the it is consistent with NBEP bylaws and federal rules, advances the CCMP, and staff and partners are afforded high quality support.</p>
<p><b>Task 1c: Work Plan and Budget Development</b> (Executive Director)</p>	July 2024	<p>Base Workplan, budget, and any amendments are drafted and approved by the Steering Committee and provided to RWU.</p>	<p>Work plan is consistent with federal requirements, aligns with the program's core services and funding, and outputs/outcomes are achieved that advance the CCMP.</p>
<p><b>Task 1d: Committee Support</b> (NBEP staff and interns)</p>	Ongoing	<p>4 Steering Committee meetings, materials, and notes.</p> <p>4 Executive Committee meetings, materials, and notes.</p> <p>Up 3 Science Advisory Committee meetings, materials, and notes.</p> <p>Up to 4 NBEP subcommittee meetings and materials.</p> <p>Up to 4 community engagement contracts.</p> <p>Meals for the equivalent of 8 committee meetings.</p> <p>Staff travel for meetings.</p>	<p>Committee oversight of the program is consistent with the bylaws and meetings are efficient, inclusive, and useful.</p>
<p><b>Task 1e: Subaward and Contract Management</b> (Staff Scientist, Watershed Outreach Manager, Ecologist)</p>	Ongoing	<p>Up to 40 subawards and contracts awarded under Base and BIL managed.</p>	<p>NBEP subawards and contracts are professionally managed to assure adherence to rules and obligations.</p>
<p><b>Task 1f: Land Acknowledgment Development</b> (Watershed Outreach Manager and interns)</p>	May 2024	<p>Up to 4 community engagement contracts.</p> <p>Land acknowledgement approved by the Steering Committee.</p> <p>Staff travel for meetings.</p>	<p>Land Acknowledgments in place that recognize the traditional land stewardship, contributions, and continued presence of indigenous people in the area.</p>
<p><b>Task 1g: Grant Writing</b> (Executive Director, Staff Scientist, Watershed Outreach Manager)</p>	September 2024	<p>Up to 2 grant proposals developed.</p>	<p>NBEP funding is augmented and more diversified.</p>

**Objective 2: Provide collaborative regional planning to advance more resilient, sustainable, and equitable natural resource management, use, and enjoyment.**

**Primary 2012 CCMP Objectives Addressed:**

- Objective 1.1: Reduce pollution from wastewater sources.
- Objective 1.2: Reduce pollution from stormwater sources.
- Objective 1.4: Manage estuaries, rivers, streams, and lakes to protect and restore beneficial uses.
- Objective 1.5: Improve funding for water projects and monitoring.
- Objective 1.6: Improve information, science, and analysis to restore fresh and salt waters.
- Objective 2.4: Increase and retain recreational opportunities and public access to the shore.
- Objective 2.5: Improve science, information, and communications for land use management.
- Objective 2.6: Increase the role of local organizations and municipalities in watershed management.
- Objective 3.3: Manage habitats to sustain and enhance function.
- Objective 3.4: Monitor, control and prevent terrestrial and aquatic invasive species.
- Objective 3.5: Improve science and communication to guide management of habitats and biodiversity.
- Objective 3.6: Build capacity to implement and cooperate on ecological restoration at state/local levels.
- Objective 4.2: Improve public and private infrastructure to withstand anticipated climate change impacts.
- Objective 4.5: Improve science and information necessary for preparedness and response.
- Objective 4.6: Ensure that coastal habitat restoration and conservation efforts consider climate change.

**Task 2a: Vision 2032 Completion**

Since late 2019 NBEP has been developing its next CCMP, called Vision 2032. EPA requires NEPs to develop these guiding documents roughly every 10 years in accordance with the [National Estuary Program Comprehensive Conservation and Management Plan Revision and Update Guidelines](#), May 2016 (CCMP Guidance). The program's first plan released in [1992](#) and the current update in place since [2012](#). The new plan will respond to best available science and local perspectives with a short-list of actions that can address priority problems in the region within the next decade. NBEP has held [17 meetings](#), received EPA concurrence on a [Vision 2032 Blueprint](#) in August 2020, received OMB approval to release two public surveys [March 2021](#) and [October 2021](#), created an [Action Planning Worksheet](#) in October 2022 that enables proposed actions to be sketched out and considered through the lenses of climate resilience, sustainable resource use, and equity, hired [Coastwise Partners](#) to consult on plan development, and maintained a [Vision2032.org](#) site for engaging the public. Based on significant feedback to date, the program set four topline goals (improving partner capacity to act, water quality, habitat quality and resilience, and the public's access to nature) in October 2022, identified [15 objectives and 38 actions](#) for meeting those goals in March 2023, and completed worksheets for all 38 actions in May 2023. NBEP also finalized a novel plan structure organized by target audience—for the public, short stories by established authors as prologues to each goal-chapter, for conservation practitioners, 38 2-pp Action Plans, and mostly for EPA, an appendix with required checklists. Hiring of authors, photographers, graphic designers, and drafting of Action Plans is ongoing.

NBEP will finish Vision 2032 under this workplan. The program will assemble the draft plan, seek public comment, pursue Steering Committee and EPA review and approval, formally publish by June 2024, and seek media attention, including separate publication of the prologue stories, as a call to action to kick-off implementation. Task 2a will be achieved through personnel time of the NBEP staff and consultant contracts, the later funded by remaining FY2022 funds.

**Task 2b: Science Working Group Convening**

In the early 2000s, NBEP helped lead a Rhode Island Habitat Restoration Team. This team served as a multi-interest/disciplinary habitat restoration workgroup to increase collaboration, effectiveness, and government funding for restoration. The formal convening of this team phased out in the 2010s as NBEP focused on development of the 2017 Report. Starting in 2020 at the suggestion of members of the Steering Committee, the program stepped back into this space by forming several science working groups to aid coordination and decision-making on key issues not being addressed by other organizations or venues, including salt marsh and SAV restoration, water clarity monitoring, use of fisher's ecological knowledge, and development of social science indicators. These groups have been cross-boundary (e.g., state) and "purpose-driven," in that they only meet when necessary and don't just 'meet to meet.' NBEP staff will continue to host the

existing working groups as needed and potentially form new groups. Habitat project prioritization and interstate water quality and habitat monitoring are topics stakeholders have said could benefit from new forums. NBEP will involve the Science Advisory Committee members with relevant expertise as appropriate. Further, hiring of a new NBEP Ecologist will expand our capacity to assist in this space. Task 2b will be accomplished through the personnel time of the NBEP staff.

**Task 2c: Regional Research, Restoration, Financial, and Engagement Planning.**

EPA CCMP and funding guidance call for NEPs to develop several a host of plans to support their operation and CCMP implementation. Monitoring, finance, outreach, and habitat restoration plans are specifically mentioned. NBEP has chosen not to develop these big picture plans to date for a host of reasons. NBEP was not viewed as an expert in these areas, management agencies and other stakeholders in each state were following their own plans, and the program was focused on completing foundational work, like publishing the Status and Trends Report and new bylaws, shifting to a new host, developing a new CCMP, and its niche in regional conservation. However, based on new programmatic stability and staffing and expected completion of Vision 2032 by June 2024, the program finds that development of several cross-boundary (e.g., states, towns, watersheds) regional plans would now be timely and useful for NBEP and its partners in FY2023. NBEP expects to pursue the following:

- Research Plan informed by regional research needs identified in the 2017 Report, FY2022 interviews with the Science Advisory Committee and subsequent committee meetings, and current literature,
- Engagement Plan that describe the target audiences, purpose, tactics, tools, and timing of NBEP’s outreach work,
- Finance Plan that identifies the cost, benefits, and sources of funding for implementing Vision 2032,
- Habitat Restoration prioritization support that enables the region to acquire and deploy more funding, and
- Monitoring coordination support, including but not limited to, collaboration with the URI Coastal Institute/RI Environmental Monitoring Collaborative on water quality and cross-state habitat monitoring building on the RI specific efforts in Tasks 4b and 4c in this workplan.

Task 2c will be accomplished through the personnel time of the NBEP staff.

**Task 2d: SNEP Support**

NBEP has received funding and otherwise offered technical support to the SNEP program since its inception. NBEP staff participate actively on the following SNEP planning committees: SNEP Steering Committee, SNEP Policy Committee, SNEP Monitoring Subcommittee, SNEP Network Advisory Committee, and Restore America’s Estuaries Grant Review Committee. Staff also help organize or attend SNEP forums, webinars, and other events. Due to an increase in requests for NBEP staff time from SNEP, the program will be strategic about its participation in SNEP activities. Task 2d will be accomplished through personnel time of NBEP staff.

**FY2023 Tasks, Completion Dates, Outputs, and Outcomes**

Task and Leads	Completion Date	Outputs	Outcome
<b>Task 2a: Vision 2032 Completion</b> (NBEP staff and interns)	June 2024	Up to 38 Actions Plans developed. Up to 5 authors hired. Draft Vision 2032. Comments on draft plan. Final Vision 2032 approved by SC/EPA. At least 5 articles on the new plan.	Vision 2032 published and implementation begins.
<b>Task 2b: Science Working Group Convening</b> (Staff Scientist, Ecologist)	Ongoing	At least 6 working group meetings. Staff travel for meetings.	Greater coordination, information exchange, and collaborative decision-making for priority issues.
<b>Task 2c: Regional Planning</b>	Ongoing	At least 6 meetings.	Regional engagement, research, fundraising, and habitat restoration

Task and Leads	Completion Date	Outputs	Outcome
(Staff Scientist, Watershed Outreach Manager, Ecologist, interns)	March 2024 September 2024 Ongoing	Research Plan and Engagement Plan. Finance Plan, habitat prioritization and monitoring coordination work Staff travel for meetings.	is more coordinated and effective at implementing the CCMP.
<b>Task 2d: SNEP Support</b> (Executive Director, Staff Scientist, Watershed Outreach Manager, Ecologist)	Ongoing	10 SNEP activities attended. Staff travel for meetings.	Improvement of SNEP and its impact on the Study Area.

**Objective 3: Communicate science in ways that is understood and useful to researchers, managers, other priority audiences.**

Primary 2012 CCMP Objectives Addressed:

- Objective 1.1: Reduce pollution from wastewater sources.
- Objective 1.2: Reduce pollution from stormwater sources.
- Objective 1.3: Reduce pollution from combined sewer overflows.
- Objective 1.4: Manage estuaries, rivers, streams, and lakes to protect and restore beneficial uses.
- Objective 1.6: Improve information, science, and analysis to restore fresh and salt waters.
- Objective 2.4: Increase and retain recreational opportunities and public access to the shore.
- Objective 2.5: Improve science, information, and communications for land use management.
- Objective 2.6: Increase the role of local organizations and municipalities in watershed management.
- Objective 3.3: Manage habitats to sustain and enhance function.
- Objective 3.5: Improve science and communication to guide management of habitats and biodiversity.
- Objective 3.6: Build capacity to implement and cooperate on ecological restoration at state/local levels.
- Objective 4.5: Improve science and information necessary for preparedness and response.
- Objective 4.6: Ensure that coastal habitat restoration and conservation efforts consider climate change.

**Task 3a: Science Updates**

NEPs periodically release complete a comprehensive status and trends report for their Study Area. NBEP’s last status and trends report published in 2017, titled [State of Narragansett Bay and Its Watersheds](#) (Report) and included 24 condition and stressor indicators. NBEP has worked with the Science Working Groups to publish Science Updates on an existing indicator ([water clarity](#)), potential new indicators ([social science](#)), and will continue to periodically publish updates that present new information related to existing/potential new indicators and emerging issues. These materials may take the form of Science Updates, Story Maps, geospatial information system (GIS) tools, data dashboards, white papers, newsletter pieces, data reports, or other means to best convey complex scientific information to specific target audiences, from restoration practitioners, to resource managers, to the general public. Exploring means to understand ecosystem change and advancing the initial social science indicators, especially public access to nature, are priorities. Further, in preparation for beginning full-scale development of the next status and trends report in FY2025, NBEP will create and seek Steering Committee and EPA concurrence on a “roadmap” for the next full Report. A quality assurance project plan (QAPP) to cover these updates was approved that runs from February 2023 to December 2024. NBEP staff will work with the Science Advisory Committee, working groups, and other experts to prioritize topics for updates and the next Report. Task 3a will be done via personnel time of NBEP staff and interns.

**Task 3b: Annual Science Event**

NBEP has been a leader in regional science for many years. Over 100 scientific reports funded by the program and the status and trends report have created a baseline of knowledge. NBEP will collaborate with the Science Advisory Committee and regional partners to design and host an annual science conference, workshop, or equivalent that addresses a topic that is especially germane to the Study Area and would benefit from deeper discussion. NBEP will be hosting a day-long



symposium on regional biodiversity and rare species stories, challenges, and opportunities at RWU on October 6, 2023. A meeting announcement, all presentations, and a meeting summary will be posted on the NBEP website. NBEP proposes to provide meals, in this case a light lunch and snack for up to 150 meeting attendees during normal business hours to attract and keep participants (Rough cost per person \$30; anticipated attendance 150; total cost: \$4,500). Task 3b will be undertaken with personnel time of NBEP and RWU staff, program participation contracts, and contracts for event hosting.

### Task 3c: Targeted Outreach

NEPs are community-based organizations. NBEP has been making a concerted effort to authentically connect with more people impacted by natural resource challenges and related actions in the Study Area. The desire is to drive more understanding of complex issues, avenues for providing input, and ownership of solutions. Further, a clear lesson from Vision 2032 outreach is that storytelling about the region’s successes (e.g., reduced nutrient pollution, open shellfishing areas) and challenges (e.g., climate change, environmental justice, emerging contaminants) is absolutely vital to realizing this deeper engagement. Hope over pessimism will be the rule. The ultimate goal is two-way learning and relationship-building from all engagement. Direct outreach avenues include attendance at NBEP’s own convenings, regional meetings and workshops, one-on-one meetings, and an active and growing MailChimp contact list of 520 partners. Indirect engagement is accomplished through publication of Science Updates, Story Maps, fact sheets, GIS tools, a monthly newsletter, press interviews and releases, and website updates. NBEP’s outreach to date has generally been project-specific and opportunistic. NBEP plans to become more strategic by developing the Engagement Plan noted under Task 2c. Task 3c will be accomplished through the time of NBEP staff, consultant contracts, and the small outreach subawards noted under Task 4a.

### FY2023 Tasks, Completion Dates, Outputs, and Outcomes

Task and Leads	Completion Date	Output	Outcome
<b>Task 3a: Status and Trends Updates</b> (Staff Scientist, Geospatial and Design Manager, Ecologist, interns)	Ongoing Ongoing June 2024	Up to 5 science updates created. 3 GIS/web-based tools developed. 1 roadmap for next Status and Trends Report.	Greater understanding and availability of scientific information on the Study Area.
<b>Task 3b: Annual Science Event</b> (Watershed Outreach Manager, Geospatial and Design Manager)	October 6, 2023	1 science event completed. 1 set of event materials posted. Up to 7 program participation contracts. Meals for the event. Travel for the event.	Event advances knowledge of an issue of local importance and NBEP/RWU as leaders in regional science.
<b>Task 3c: Targeted Outreach</b> (Watershed Outreach Manager, interns)	Ongoing	Up to 10 new/revised outreach publications. At least 6 monthly newsletters. At least 10 presentations offered. 50 meetings/events joined. 1 set of NEP communications materials from Association of National Estuary Programs (ANEP). Up to 5 program participation contracts.	Greater understanding by the interested public of the environmental issues facing in the Study Area and NBEP’s and partners work to address them.

### Objective 4: Award funding to partners to help implement the CCMP.

#### Primary 2012 CCMP Goals Addressed:

- Objective 1.4: Manage estuaries, rivers, streams, and lakes to protect and restore beneficial uses.
- Objective 1.6: Improve information, science, and analysis to restore fresh and salt waters.
- Objective 2.2: Preserve open space and natural systems.
- Objective 2.5: Improve science, information, and communications for land use management.
- Objective 2.6: Increase the role of local organizations and municipalities in watershed management.

- Objective 3.1: Conserve natural landscapes at risk by development and climate change.
- Objective 3.3. Manage habitats to sustain and enhance function.
- Objective 3.4. Monitor, control and prevent terrestrial and aquatic invasive species.
- Objective 3.5: Improve science and communication to guide management of habitats and biodiversity.
- Objective 3.6. Build capacity to implement and cooperate on ecological restoration at state/local levels.
- Objective 4.5: Improve science and information necessary for preparedness and response.
- Objective 4.6: Ensure that coastal habitat restoration and conservation efforts consider climate change.

#### **Task 4a: Small Education and Outreach Subawards**

NBEP is looking to extend its outreach work to new audiences in the Study Area. Tasks 2c and 3c speak to this plan. The program is pursuing direct engagement with certain interests, and recently began funding local partners with their own outreach programs whose goals align with the CCMP (e.g., Blackstone Watershed Collaborative, Blackstone River Watershed Council, RI School of Design). This indirect outreach via partners has worked well, especially building new trusting connections with indigenous communities. NBEP intends to expand and formalize this support by creating a Small Education and Outreach grant program that will fund partners' programs and events that connect new people to local environmental issues and provide ready opportunities to celebrate successes and take action to address problems moving forward. A request for proposals (RFP) or direct awards may be used to share funds. NBEP expects to provide up to 10 subawards that range from \$5K-\$15K. Task 4a will be accomplished through the time of NBEP and RWU staff under Tasks 1a and 1b and subawards up to \$57,573.

#### **Task 4b: RI Department of Environmental Management Ecological Data Analyst Subaward**

The RI Department of Environmental Management (RIDEM) serves as the steward for the State's natural resources, such as marine and anadromous species and terrestrial wildlife. To sustainably manage these resources, the [RIDEM Division of Marine Fisheries](#) and [Division of Fish and Wildlife](#) conduct long-term monitoring of biota to determine how their population trajectories change over time, and discern what is driving change (e.g. climate, harvest, ecosystem dynamics, habitat alteration, anthropogenic stressors). While the data themselves are a primary scientific basis for informing management actions as needed, supplemental analytical tools or statistical models are often built, with these data as input, to account for non-observed processes from the data but operating in the system. Common examples of this are stock assessment models: observations on relative abundance from agency programs are a critical data source for the models, but the models themselves can predict larger scale biological indicators (e.g. recruitment) or processes (e.g. mortality). While many of the joint state-federally managed resources have adequate financial support and staffing, state-only managed species or resource management programs do not have such support available. DMF and DFW have many analytical and modeling needs to help better manage these resources in RI and their systems that expand into other states (e.g., Narragansett Bay), but they are often inhibited from developing these tools due to short staffing. As a result, RIDEM is left without staff to assemble existing data, run and build models, coordinate with neighboring states, and deliver information in a format that is timely and readily useable for tracking performance, assessing system changes, and adapting programs.

NBEP will subaward \$75,000 through the Atlantic States Marine Fisheries Commission (ASMFC) to RIDEM to cover three-quarters of a new contract Ecological Data Analyst (modeler, biometrician, statistician) dedicated to providing these services. RIDEM will provide the remaining \$25,000 to fund a full FTE. The Ecological Data Analyst will include, but are not limited to:

- Advancing the historical, currently used Narragansett Bay Atlantic Menhaden Management Area model used to estimate fine scale abundance and distribution of this species,
- Developing data limited stock assessment models for Atlantic Horseshoe Crabs in Rhode Island waters,
- Construct a stock assessment model for Northern Quahog,
- Use available River Herring long-term relative abundance data to quantify ecological and economic benefits from prospective river passage enhancement, and understand what is driving current population levels.
- Use Narragansett Bay time series data to discern which environmental condition have contributed to the bay's ecosystem change over time.
- Conduct landscape-level analysis of bird atlas data.

NBEP will manage the subaward, including the agreement with ASMFC that will define the tasks to be completed by the new hire, but will not be involved in the hiring process. The program intends to support this position at some level over the next few years to allow time for development of work products that will help the state establish a long-term financially sustainable and FTE to complete this work. Task 4b will be accomplished through NBEP and RWU staff under Tasks 1a and 1b and subaward to ASMFC.

**Task 4c: RI Natural History Survey Biodiversity Database Subaward**

The [RI Natural History Survey](#) (RINHS) connects people with knowledge about the state’s animals, plants, and natural systems with each other and those who can use that information for research, education, and conservation. Documentation of RI’s plants and animals are spread across individual monitoring databases, assessments, restoration project reports, and volunteer initiatives, often only in printed form that are scarce. This wealth of data on the state’s rare species, invasive species, and overall biodiversity is not compiled and collated in one place where restoration practitioners and managers can access this information. This data isolation at the site level prevents evaluation of status and trends at other geographic and conceptual scales where ecological restoration is best pursued. A comprehensive biodiversity database has been needed some time that illuminates conditions, priorities, management decisions at the landscape scale. In the early 2000s, RINHS built an all-taxa biodiversity database, the Biota of Rhode Island Inventory System (BORIIS) to document species presence. Due to data quality concerns and technical reasons, BORIIS has limited usability and updates ceased in 2008. A successor database, BORIIS2, has been under development for several years, which would create a more complete and useable index of species, observer, date, location, and evidence. A proposal by RINHS submitted to the RI Coastal and Estuary Habitat Restoration Trust Fund to advance BORIIS2 for wetlands plants was viewed very favorably by the review committee, but not competitive for the funding source. However, RINHS has secured a multi-year commitment of provide funding of roughly \$15,000 per year to support the development effort. Further, the survey has also recently established a user group of key stakeholders to guide development of the new tool.

NBEP will subaward \$100,000 to RINHS to match existing private funding to develop a “beta” RI biodiversity database (called BORIIS2 or otherwise). The existing BORIIS/2 work will be leveraged as appropriate, data captured, cleaned, and input, and the tool tested to guide creation of queries and reports, assess user experience, and inform more final development steps. RINHS will also coordinate with neighboring states and consider existing national biodiversity tools to maximize continuity and ease future collaboration. The goal is a beta database that creates a curated index of best available biodiversity data that is usable by RINHS staff and at least select restoration partners and is ready for final development. The extent of RI biota included and degree of functionality and public accessibility of the beta version will be determined based on total available funding and included in the final subaward agreement between RWU and RINHS. With a foundational tool in place, upgrades to include modeling (like that built into MA’s [BioMap](#)), integration of data from public observation apps, and other expansions may be explored based on need and funding availability. Task 4c will be accomplished through NBEP and RWU staff time under Tasks 1a and 1b and a subaward to RINHS.

**FY2023 Tasks, Completion Dates, Outputs, and Outcomes**

Task	Completion Date	Outputs	Outcome
<b>Task 4a: Small Education and Outreach Subawards</b> (Watershed Outreach Manager)	Ongoing	One RFP and related solicitation documents (if used) Scopes of work, budget, and agreements with subawardees Up to 10 outreach efforts funded. Final reports.	People are more knowledgeable about the environmental challenges facing the area and how they can help.
<b>Task 4b: RIDEM Fish &amp; Wildlife Data Analysis Subaward</b> (Ecologist)	Start Jan 2024	1 scope of work, budget, and agreement. 1 Ecological Data Analyst hired by RIDEM. At least 4 revised/new modeling tools completed. Quarterly and final reports, including funding strategy for coming years.	RIDEM has greater capacity to analyze existing fish and wildlife data, analysis is used to inform management decisions, and the position’s value is established.

## FY2023 Tasks, Completion Dates, Outputs, and Outcomes

Task	Completion Date	Outputs	Outcome
<b>Task 4c: RINHS Biodiversity Database Subaward</b> (Ecologist)	Start Jan 2024	1 scope of work, budget, and agreement. 1 working beta biodiversity database. Quarterly and final reports, including next steps to achieve a final version.	Beta biodiversity database that offers sufficient data and functionality to improve the quantity, quality, and availability of information on RI biota.

### II. NON-FEDERAL MATCH

NBEP's Steering Committee includes many partners that are implementing projects that directly implement the actions consistent with the 2012 CCMP. A summary of each entity providing 1:1 non-federal match for this FY2023 cooperative agreement is included below and match documentation is provided for each source of funds:

- Narragansett Bay Commission: Staff time and supplies for Bay monitoring--\$100,000
- RI Department of Environmental Management: Staff time, fringe benefits, and State bond projects--\$980,905
- MA Department of Environmental Protection: Staff time, fringe benefits, and indirect--\$19,095

### Appendix A: New Subawards and Contracts Using FY2023 Funding\*

Task(s)	Project	Amount	Major Outputs	Procurement	Funding Close
All tasks	All tasks.	\$31,984	Up to 4 non-RWU students hired to support NBEP or partners.	Contract	9/30/26
Task 1d, 1e, 3b, 3c	Community Engagement Contracts for specified tasks.	\$9,750	Up to 20 outside people paid to speak, attend, or otherwise offer their experience.	Contract	9/30/26
Task 3c	Targeted Outreach.	\$4,000	1 set of NEP communications materials from ANEP.	Contract	9/30/26
Task 4a	Small Education and Outreach Subawards	\$57,573	Up to 10 outreach efforts funded.	Subaward	9/30/26
Task 4b	RIDEM Fish & Wildlife Ecological Data Analyst Subaward	\$75,000	1 Ecological Data Analyst position hired by RIDEM through ASMFC	Subaward	9/30/26
Task 4c	RINHS Biodiversity Database Subaward	\$100,000	1 working beta biodiversity database created.	Subaward	9/30/26

\*Partial funding for Community Engagement contracts (Tasks 1d, 1e, 3b, 3c) and full funding for the Land Acknowledgement (Task 1f) and Vision 2032 Completion (Task 2a) are included in the FY2022 Base Workplan.

### Appendix B: Grant Performance Report

The NBEP Steering Committee presentations provided after Page 13 of 13 below include quarterly reports that collectively satisfy the obligation to submit an annual performance report as required under the terms and conditions of the Cooperative Agreement (CE00A00967).

## Appendix C: Travel Report

### NBEP Trips Taken June 17, 2022 to June 16, 2023

Date	Purpose	Destination	Staff	Cost
				<b>\$8,097.39</b>
6/22/2022	New England Estuarine Research Society (NEERS) meeting	Warwick, RI	Courtney Schmidt	96.00
9/23/2022	STEAM'd Podcast	New Haven, CT	Courtney Schmidt	62.00
9/30/2022	NBEP Plastics Event	Bristol, RI	CA WRB	1,076.47
11/17/2022	NEERs Conference	Providence, RI	Courtney Schmidt	125.00
11/17/2022	NEERs Conference	Providence, RI	Mike Gerel	19.00
12/4/2022	Restore American Estuaries Conference	New Orleans, LA	Mike Gerel	1,744.32
12/4/2022	Restore American Estuaries Conference	New Orleans, LA	Courtney Schmidt	1,725.94
2/1/2023	Hack4Oceans Class	Narragansett, RI	Courtney Schmidt	30.31
2/2/2023	URI STORMTOOLS	Narragansett, RI	Courtney Schmidt	30.31
2/21/2023	Vision 2032 Tour	Warwick, RI	Courtney Schmidt	25.06
3/1/2023	Brown University Bay modeling	Providence, RI	Courtney Schmidt	1.69
3/20/2023	EPA National Estuary Program Workshop	Washington, DC	Mike Gerel	1,949.76
3/21/2023	Coastal Institute C-SEA meeting	Barrington, RI	Darcy Young	15.20
4/11/2023	Vision 2032 meeting	Pawtucket, RI	Darcy Young	3.93
4/13/2023	Lower Blackstone Dam tour	Pawtucket, RI	Darcy Young	6.29
4/14/2023	URI GSO Class	Narragansett, RI	Courtney Schmidt	31.77
4/18/2023	Save The Bay and SRPEDD tour	Lakeville, MA	Darcy Young	53.32
4/24/2023	Science Advisory Committee meeting	Providence, RI	Darcy Young	6.81
4/27/2023	NEERs Conference	Brooklyn, NY	Courtney Schmidt	912.78
5/3/2023	Mass ECAN Conference	Worcester, MA	Darcy Young	51.48
5/9/2023	RTWN meeting	Dighton, MA	Darcy Young	31.18
5/16/2023	Save The Bay and SRPEDD Event	Lakeville, MA	Darcy Young	52.14
5/18/2023	RI Sea Grant meeting	Narragansett, RI	Darcy Young	37.34
5/21/2023	Lower Blackstone Dams Passage Parade	Pawtucket, RI	Darcy Young	6.29

### NBEP Trips Anticipated June 17, 2023 to September 30, 2023

Date	Purpose	Destination	Number of Staff	Est. Cost
				<b>\$200.44</b>
6/28/2023	NBEP 2023 Program Evaluation	Pawtucket, East Providence, Providence, Westerly, RI	Mike Gerel, Courtney Schmidt, Darcy Young, Mariel Sorlien	65.06
6/29/2023	NBEP 2023 Program Evaluation	Weekapaug, RI; New Bedford, MA; Bristol, RI, Providence, RI	Mike Gerel, Courtney Schmidt, Darcy Young, Mariel Sorlien	98.75
6/30/2023	NBEP 2023 Program Evaluation	Providence, RI	Mike Gerel, Courtney Schmidt, Darcy Young, Mariel Sorlien	10.50
9/14/2023	NBEP Steering Committee meeting	Taunton, MA	Mike Gerel, Courtney Schmidt, Darcy Young, Mariel Sorlien	26.13

# NARRAGANSETT BAY ESTUARY PROGRAM

Steering Committee Meeting  
December 15, 2022, 1-4pm

# Agenda

Subject	Presenter(s)	Shared via Zoom	Formal Committee Action Requested Today	Time Start
Meeting Open	Regina Lyons, Chair	Agenda	Approve September notes.	1:00p
Quarterly Program Report	Mike Gerel, NBEP Courtney Schmidt, NBEP Mariel Sorlien, NBEP Darcy Young, NBEP	PPT	None.	1:15p
Vision 2032 Update	Darcy Young, NBEP Holly Greening & Rich Batiuk, Coastwise Partners	PPT	None.	1:45p
Committee Member Updates	Committee members	None	None.	2:05p
Steering Committee Meetings in 2023	Mike Gerel, NBEP	PPT	None	2:35p
Public Comment / Break				2:50p
FY2021 Funds Re-Budget Discussion	Mike Gerel, NBEP	PPT	Vote whether to approve shifting half of the left-over FY2021 NBEP budget from personnel/admin costs to habitat planning subawards.	2:55p
Steering Committee Membership Approval	Sue Kiernan, RIDEM Regina Lyons, EPA	PPT	Vote whether to approve the Nominating Subcommittee's slate of Steering Committee appointments.	3:15p
Intern/Extern Ideas Brainstorm	Courtney Schmidt, NBEP	Google Slide	None.	3:35p
Meeting Close	Mike Gerel, NBEP	None	None.	3:55p

## Decision #1

Does the Steering Committee approve the  
September meeting notes?



# NBEP Quarterly Program Report

# Financials

## NBEP Revenue vs. Expenses (12.8.22)<sup>(1),(2)</sup>

### REVENUE

Source	FY2021	FY2022	FY2023	Total
§320	\$ 443,322	\$ 750,000	\$ -	\$ 1,193,322
SNEP		\$ 250,000	\$ -	\$ 250,000
BIL	\$ -	\$ 909,800	\$ 909,800	\$ 1,819,600
Program Income <sup>(3)</sup>	\$ -	\$ 2,500	\$ -	\$ 2,500
<b>Subtotal</b>	<b>\$ 443,322</b>	<b>\$ 1,912,300</b>	<b>\$ 909,800</b>	<b>\$ 3,265,422</b>

### EXPENSES

Category	FY2021 §320 and SNEP <sup>(4)</sup>			FY2022 §320 and SNEP			FY2022 BIL			FY2023 §320 and SNEP <sup>(5)</sup>			FY2023 BIL			Total		
	Budget	Expenditures	Balance	Budget	Expenditures	Balance	Budget	Expenditures	Balance	Budget	Expenditures	Balance	Budget	Expenditures	Balance	Budget	Expenditures	Balance
Personnel and Fringe	\$ 191,616	\$ -	\$ 191,616	\$ 528,822	\$ -	\$ 528,822	\$ -	\$ -	\$ -	\$ -	\$ -	\$ -	\$ -	\$ -	\$ -	\$ 720,438	\$ -	\$ 720,438
Travel	\$ -	\$ -	\$ -	\$ 12,700	\$ -	\$ 12,700	\$ -	\$ -	\$ -	\$ -	\$ -	\$ -	\$ -	\$ -	\$ -	\$ 12,700	\$ -	\$ 12,700
Supplies	\$ -	\$ -	\$ -	\$ 3,700	\$ -	\$ 3,700	\$ -	\$ -	\$ -	\$ -	\$ -	\$ -	\$ -	\$ -	\$ -	\$ 3,700	\$ -	\$ 3,700
Contracts	\$ -	\$ -	\$ -	\$ 100,350	\$ -	\$ 100,350	\$ -	\$ -	\$ -	\$ -	\$ -	\$ -	\$ -	\$ -	\$ -	\$ 100,350	\$ -	\$ 100,350
Other	\$ 225,000	\$ -	\$ 225,000	\$ 277,833	\$ -	\$ 277,833	\$ 909,800	\$ 3,900	\$ 905,900	\$ -	\$ -	\$ -	\$ 909,800	\$ -	\$ 909,800	\$ 2,322,433	\$ 3,900	\$ 2,318,533
Subawards	\$ 225,000	\$ -	\$ 225,000	\$ 250,000	\$ -	\$ 250,000	\$ 909,800	\$ 3,900	\$ 905,900	\$ -	\$ -	\$ -	\$ 909,800	\$ -	\$ 909,800	\$ 2,294,600	\$ -	\$ 2,294,600
Other Administrative	\$ -	\$ -	\$ -	\$ 27,833	\$ -	\$ 27,833	\$ -	\$ -	\$ -	\$ -	\$ -	\$ -	\$ -	\$ -	\$ -	\$ 27,833	\$ -	\$ 27,833
<b>Total Direct</b>	<b>\$ 416,616</b>	<b>\$ -</b>	<b>\$ 416,616</b>	<b>\$ 923,405</b>	<b>\$ -</b>	<b>\$ 923,405</b>	<b>\$ 909,800</b>	<b>\$ 3,900</b>	<b>\$ 905,900</b>	<b>\$ -</b>	<b>\$ -</b>	<b>\$ -</b>	<b>\$ 909,800</b>	<b>\$ -</b>	<b>\$ 909,800</b>	<b>\$ 3,159,621</b>	<b>\$ 3,900</b>	<b>\$ 3,155,721</b>
<b>Total Indirect<sup>(7)</sup></b>	<b>\$ 26,706</b>	<b>\$ -</b>	<b>\$ 26,706</b>	<b>\$ 76,595</b>	<b>\$ -</b>	<b>\$ 76,595</b>	<b>\$ -</b>	<b>\$ -</b>	<b>\$ -</b>	<b>\$ -</b>	<b>\$ -</b>	<b>\$ -</b>	<b>\$ -</b>	<b>\$ -</b>	<b>\$ -</b>	<b>\$ 103,301</b>	<b>\$ -</b>	<b>\$ 103,301</b>
<b>Subtotal</b>	<b>\$ 443,322</b>	<b>\$ -</b>	<b>\$ 443,322</b>	<b>\$ 1,000,000</b>	<b>\$ -</b>	<b>\$ 1,000,000</b>	<b>\$ 909,800</b>	<b>\$ -</b>	<b>\$ 905,900</b>	<b>\$ -</b>	<b>\$ -</b>	<b>\$ -</b>	<b>\$ 909,800</b>	<b>\$ -</b>	<b>\$ 909,800</b>	<b>\$ 3,262,922</b>	<b>\$ -</b>	<b>\$ 3,259,022</b>

### NET

Unbudgeted	\$ -	\$ 2,500	\$ -	\$ 2,500
------------	------	----------	------	----------

(1) Listed fiscal years are "EPA fiscal years," that is, they represent the year they were awarded. So an award that runs from October 1, 2021 to September 30, 2022 is considered to be "FY2021" by EPA. More typically, this time period would be considered FY2022.

(2) Note that ONLY expenditures through 12.8.22 are included. All 320/SNEP expenditures are included in FY2021 for the purposes of this report (RWU Finance began billing 320/SNEP costs against the FY2022 budget in their Roger Central tracking systems beginning July 1st as per their June-June fiscal year approach). Discussions are ongoing to figure out how to better align RWU Finance and EPA budgeting, invoicing, and reporting needs in calendar year 2023.

(3) RWU has established an account to capture any donations, sponsorships, or other non-grant related Program Income provided to NBEP. EPA has been made aware of this revenue category. To date, a \$2,500 sponsorship from URI was provided for the NBEP Plastics event.

(4) These numbers represent a proposed re-budget of FY2021 funds left "unencumbered" as of 12.8.22 (\$1,283,276 unbilled-\$839,954 encumbered = \$443,322 unencumbered). Unencumbered funds are split roughly 50/50 between personnel and new subawards in this proposed re-budget represented here that we will discuss today.

(5) Section 320 and SNEP funds for FY2023 have not been awarded yet. These funds are expected by October 2023.

(6) Includes office water, phone, internet, outside printing, registration fees, conference hosting, meals, professional development, advertising, and copy paper.

(7) The RWU budget takes all indirect "off the top" at the beginning of the year, and does not report indirect charged per period or otherwise on an ongoing basis. Therefore, the indirect included in this table is an NBEP calculated figure based on 20% of charged personnel.

# FY2021 Workplan & Budget Amendment

- Draft paperwork in place to support an FY2021 Workplan and Budget Amendment that describes plans for left-over FY2021 funds—money that remains “unencumbered” as of 12/8/22
- \$443K is left-over, and we propose to split 50/50 for personnel and new RFP for habitat/access subawards\*
- This change requires approval by the Steering Committee (later today) and then EPA

\* Note this is less than the \$671K listed as left-over at the November Executive Committee meeting. This is because these numbers presented to the EC were as of 10/4/22 and we have continued to spend these monies and proceeded with two new subawards (\$60K for BU and \$50K for Blackstone Collaborative) that were below the \$70K threshold requiring approval.

<b>Attachment B: Program Narrative</b> <b>National Estuary Program Funding</b> <b>Narragansett Bay Estuary Program</b> <b>EPA Support FY2021-FY2023</b>  <i>Amendment #2: December 8, 2022</i>	
<b>Applicant:</b>	Roger Williams University
<b>Applicant Contact:</b>	Allen Hance, Ph.D. Associate Provost for Global and Community Engagement Roger Williams University One Old Ferry Road Bristol, RI 02809 (401) 965-6594 <a href="mailto:ahance@rwu.edu">ahance@rwu.edu</a>
<b>USEPA Region 1 Project Officer:</b>	Caitlyn Whittle U.S. EPA Region 1 5 Post Office Square, Suite 100 (OEP06-1) Boston, MA 02109-3912 (617) 918-1748 <a href="mailto:whittle.caitlyn@epa.gov">whittle.caitlyn@epa.gov</a>
<b>Narragansett Bay Estuary Program Executive Director:</b>	Mike Gerel Narragansett Bay Estuary Program 235 Promenade Street – Suite 393 Providence, Rhode Island 02908 (804) 332-1197 <a href="mailto:mike.gerel@nbep.org">mike.gerel@nbep.org</a>
<b>Project Period:</b>	October 1, 2021 – September 30, 2024

# FY2022 Subaward Paperwork



- FY2022 Workplans included 10 direct subawards as per current best practice for advancing projects, especially in new areas
- Created standardized guidance and templates that streamlined the process as much as possible
- 7 agreements now in place; 2 pending signatures and 1 pending approval to provide an advance for working capital
- Despite direct awards and streamlining, paperwork for federal awards through RWU remains extensive
- Meeting federal financial requirements and Justice 40 goals are not well aligned—very challenging for all involved
- Will learn from these awards and proposed RFP and decide how to proceed with 2023 funds


# 2023 Program Evaluation

- NBEP and Region 1 just learned we are scheduled for an EPA HQ Program Evaluation in 2023
- All NEPs are subject to a PE every 5 years
- NBEP last reviewed in 2018, apparently a year late, so we're up next year
- Set schedule from January to August
  - Kick-off meeting in January
  - PE package due to EPA in April
  - EPA on-site visit to present preliminary findings to Steering Committee in June
  - Results letter to us by August



# New Data Stories & Tools

Clean Water and Quahogs: Changes in Narragansett Bay

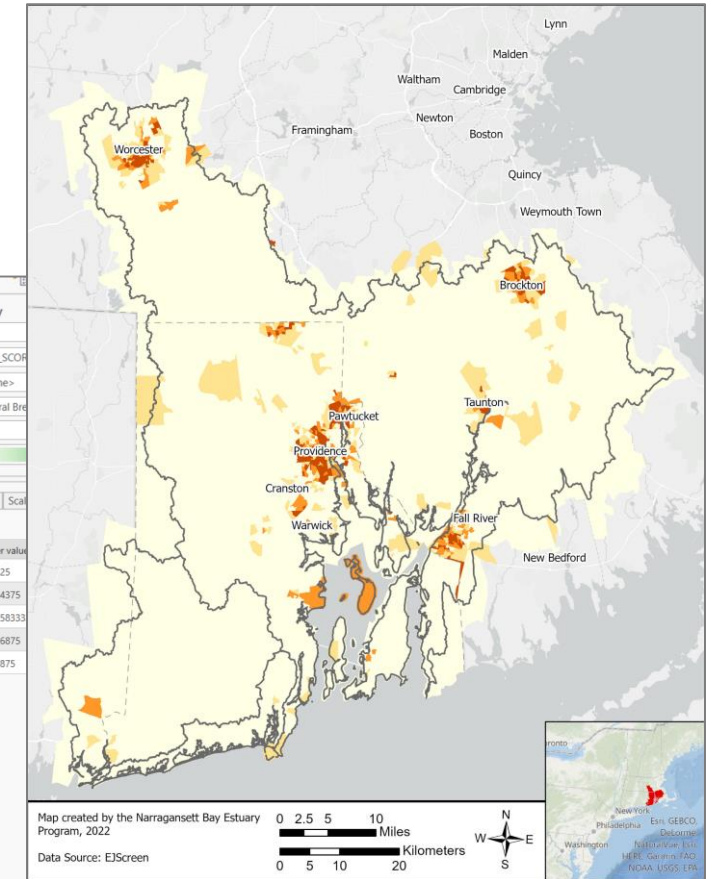
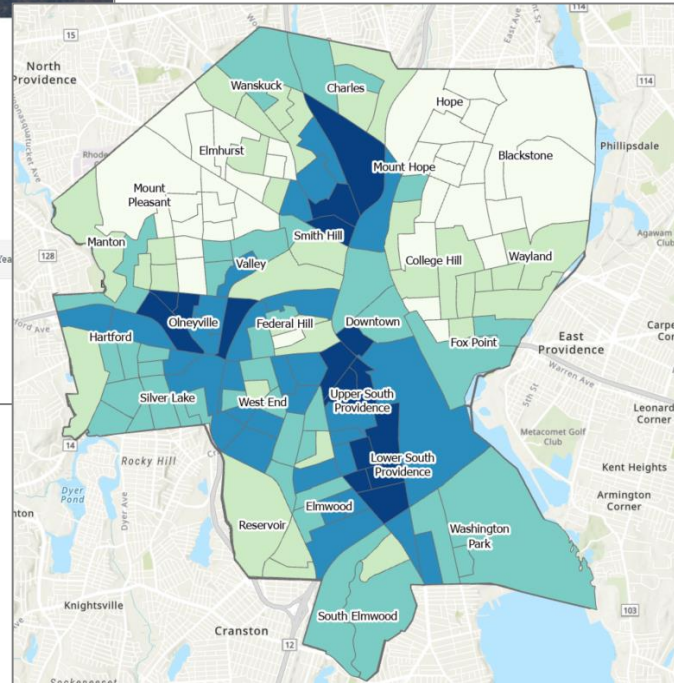



## Clean Water and Quahogs: Changes in Narragansett Bay

NBEP\_GIS  
October 26, 2022

Historic Closures Shellfishing (2020) Shellfish and Bacteria Twenty Years of Change Wastewater Treatment Upgrades Looking Forward Learn More Compare Year

Quahogs, also known as hard shell clams, are a popular, simple to gather shellfish. Whether served as stuffies or chowder, quahogs are a staple in New England. They have a long history in the region.



- ✓ Quahog StoryMap published in October
- ✓ Providence EJ tool completed this month
- ✓ New NBEP EJ tool next summer

# Plastics Event



- 75 attendees
- Excellent speakers, especially keynote
- Some take homes:
  - Humans have had a relationship with plastic since Industrial Revolution
  - More plastic in bottled water than tap
  - Clothing sheds microplastic
  - Need to reduce upstream sources while cleaning downstream
- 5-page summary of event and video to be posted on website this winter

# Outreach Highlights

9/16 - RIDOH re: Climate and Health Equity Zones	11/3 - Project Drawdown re: responding to climate change
9/22 - URI Sea Grant re: Plastics event	11/4 - Roger Williams Park re: SNEP grant announcement
9/29 - Project STEAM'd Podcast re: Urban watersheds	11/4 - CERF Governing Board meeting
9/29 - TNC-RI, Blackstone Collab, BRWC re: Fish advocacy	11/9 - RWU School of Social and Natural Sciences meet re: partnering
9/30 - Coastwise Partners re: Vision 2032 support	11/11, 12/13 - SNEP Ecosystem Services Subcommittee meeting
10/5 - EPA NEP EJ Workgroup re: BIL equity tool	11/14 - SNEP Steering Committee meeting
10/11 - NEP Directors meeting re: Dec RAE conference	11/15 - CFRF re: ghost gear
10/12 - RI Rivers Council meeting re: Vision 2032 talk	11/15 - Resilient Taunton Watershed Network
10/14 - SNEP Green Infrastructure Meeting	11/15 - MIT re: aquaculture, eel grass interactions
10/14, 11/16, 12/9 - City of Providence re: City EJ Tool	11/17-11/18 – Annual NEERS meeting, NBEP talk
10/14 - RWU re: LOI for PFAS Grant	11/18 - EPA AECD re: public access
10/19 - WRWC re: Salmon Street project visit	11/22 – URI re: NB seaweed study
10/20 - RIIB Info Session re: Municipal Resilience Program	11/22 – NBNERR re: Succotash project planning meeting
10/21 - RWU Advancement re: Stem K-5 project	11/29 – RI Habitat Trust Fund Pre-Proposal Committee
10/26 - Island Foundation re: EJ group capacity funding	11/29 – Bryant University re: NBEP update
10/26, 11/1, 11/3, 11/8, 11/10 - NEP Fall EJ Forums	12/1 - URI Coastal Institute re: CI strategic plan
10/27, 12/12 - Kerri Arsenault re: Vision 2032 story support	12/1 - Wood-Pawcatuck Watershed Association re: partnering
10/28 - URI re: Optimum nitrogen CHRP proposal	12/4-12/8 - RAE Conference in New Orleans
10/31 - FSU, St Andrews and St Joseph Bays Estuary Program	12/14-12/15 - Coastwise, STB, NBNERR, WRWC re: study area tour/discussion




# Status of 24 Existing Subawards

Project	Location	Source	Award	Bal	Status
Audubon Society of RI	Providence, RI	SNEP 2021	\$73,000	\$42,468	Collecting data on effectiveness of GI after large rainstorms
Town of Barrington, RI	Barrington, RI	SNEP 2021	\$33,700	\$28,858	Collecting data on existing stormwater infrastructure and GI
Town of Bristol, RI	Bristol, RI	SNEP 2021	\$70,818	\$70,818	Engaged with contractor; developing QAPP
Clark University	Blackstone Watershed, RI/MA	SNEP 2021	\$25,000	\$25,000	Held training sessions to broaden community partnership
City of East Providence, RI	East Providence, RI	SNEP 2021	\$45,000	\$45,000	Selected engineering firm and held project kick-off meeting
Groundwork RI	Providence, RI	SNEP 2021	\$92,099	\$89,353	Completed QAPP and held stakeholder engagement meetings
Groundwork Southcoast	Fall River, MA	SNEP 2021	\$25,000	\$0	Project done; outreach led to Cook Pond project \$215K SNEP award
NB National Estuarine Research Reserve	Prudence Island, RI	§320 2021	\$50,015	\$50,015	Developing scope of work and contacting potential landscaping firms
Southern RI Conservation District	Westerly, RI	SNEP 2021	\$75,000	\$5,694	Finalized QAPP; developed outreach materials and conceptual plans
Town of South Kingstown, RI	South Kingstown, RI	§320 2021	\$99,000	\$99,000	Finalized QAPP; Collecting data and finalizing locations
Woonasquatucket River Watershed Council	Providence, RI	SNEP 2021	\$60,410	\$58,531	Met with site owner, and Nuevo Voces to establish outreach team
Blackstone River Watershed Council	Central Falls to Pawtucket, RI	§320 2021	\$10,000	\$5,550	Purchased PFDs, printed educational materials, paid speaker
RI School of Design	Blackstone Watershed, RI/MA	§320 2021	\$15,000	\$5,303	Project complete; Paddle and materials complete 8/14/22
Boston University	Narragansett Bay, RI/MA	§320 2021	\$110,954	\$110,954	Agreement in development
NBNERR	South Kingstown, RI	SNEP 2022	\$200,000	\$200,000	Agreement executed 11/9/22
Clark University	Blackstone Watershed, RI/MA	§320 '21/SNEP '22	\$100,000	\$100,000	Agreement executed 11/17/22
Environmental Council of RI / REJC	Providence, RI	BIL 2022	\$100,000	\$100,000	Agreement in development.
SRPEDD	Taunton River Watershed, MA	BIL 2022	\$100,000	\$100,000	Agreement executed 11/16/22
Old Colony Planning Council	Brockton to Plymouth, MA	BIL 2022	\$75,000	\$75,000	Agreement executed 11/29/22
Groundwork Southcoast	Fall River, MA	BIL 2022	\$75,000	\$75,000	Agreement executed 12/2/22
Save The Bay	NB and Coastal Ponds, RI/MA	BIL 2022	\$100,002	\$100,002	Agreement executed 11/21/22
Wood-Pawcatuck Watershed Association	Wood-Pawcatuck Watershed, RI	BIL 2022	\$134,800	\$134,800	Agreement executed 11/10/22
Nature Conservancy of RI	Valley Falls to Pawtucket, RI	BIL 2022	\$300,000	\$300,000	Agreement executed 11/3/22;
Blackstone River Watershed Council	Central Falls to Pawtucket, RI	BIL 2022	\$15,000	\$11,100	Agreement executed 10/25/22; hosted intertribal gathering
Totals:			<b>\$1,984,798</b>	\$1,807,446	

# vision 2032



- Vision 2032 Subcommittee met September 16<sup>th</sup> in Providence
  - “Final” 4 goals, 14 objectives, and 39 actions
  - Added *Goal #4: Assure safe and equitable access to and use of nature*
- Hired Coastwise Partners to assist with watershed planning
- Next steps this winter
  - Staff creating Draft Action Plans and completing action-specific outreach
  - Hire writers and designer and map out stories and document format
- Next meeting in February
- Looking to be done and done Jan 2024

Plan Structure		
Plan Element	Audience	Includes...
Story  The Environmental Storytelling Studio	Public	5 linked “feature” stories by environmental authors that open selected chapters of plan & that are suitable for separate publication. “Illustrate the macro in the micro”
Action Plans	Partnership	39 2-page Action Plans
Appendices	EPA	“Box-checks”—Comparison to 2012 CCMP, Climate Vulnerability Assessment Table, etc.

# Vision 2032

## Coastwise Partners Introduction and Lessons Learned

Steering Committee Meeting

December 15, 2022



**NARRAGANSETT BAY  
ESTUARY PROGRAM**



## Who we are



**Holly Greening**

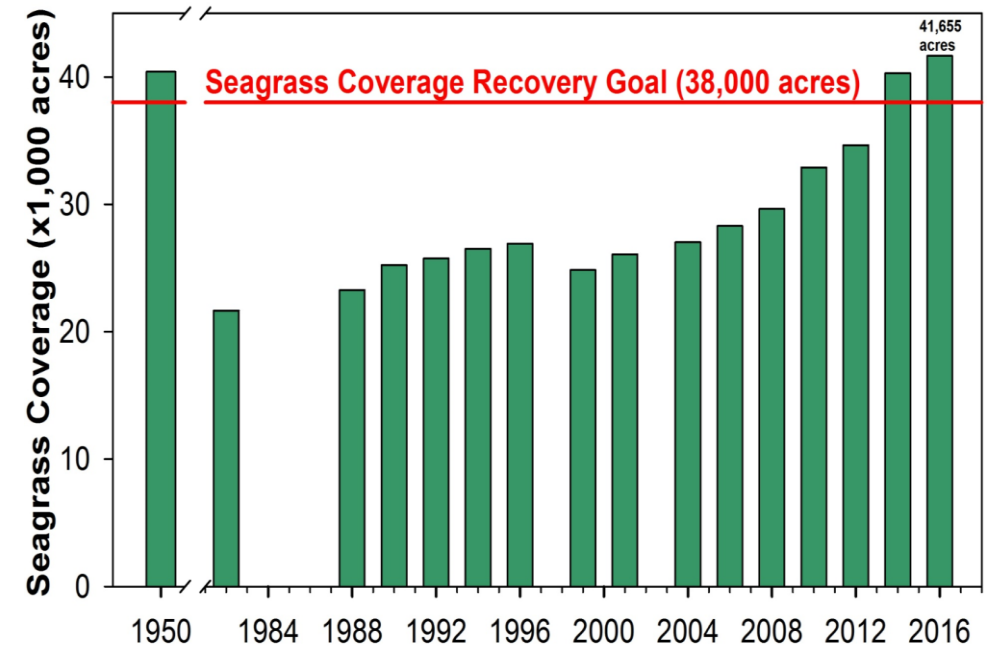
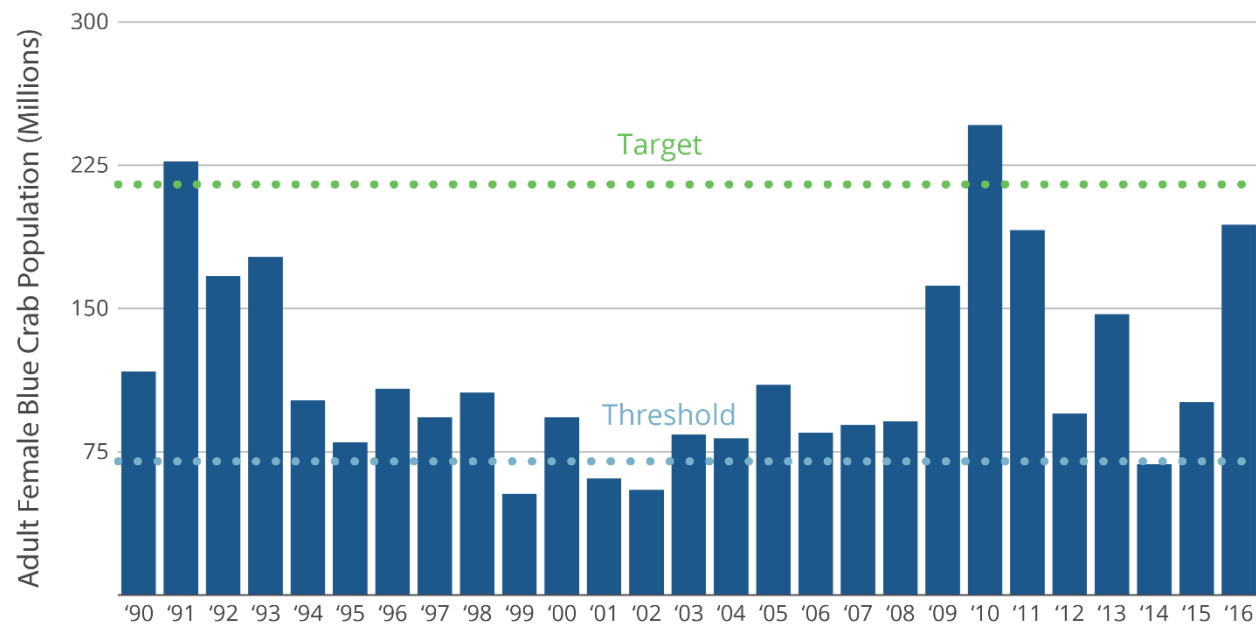
Executive Director Tampa Bay Estuary Program. Facilitated Tampa Bay Estuary Program's successful nutrient management and seagrass recovery strategy.



**Rich Batiuk**

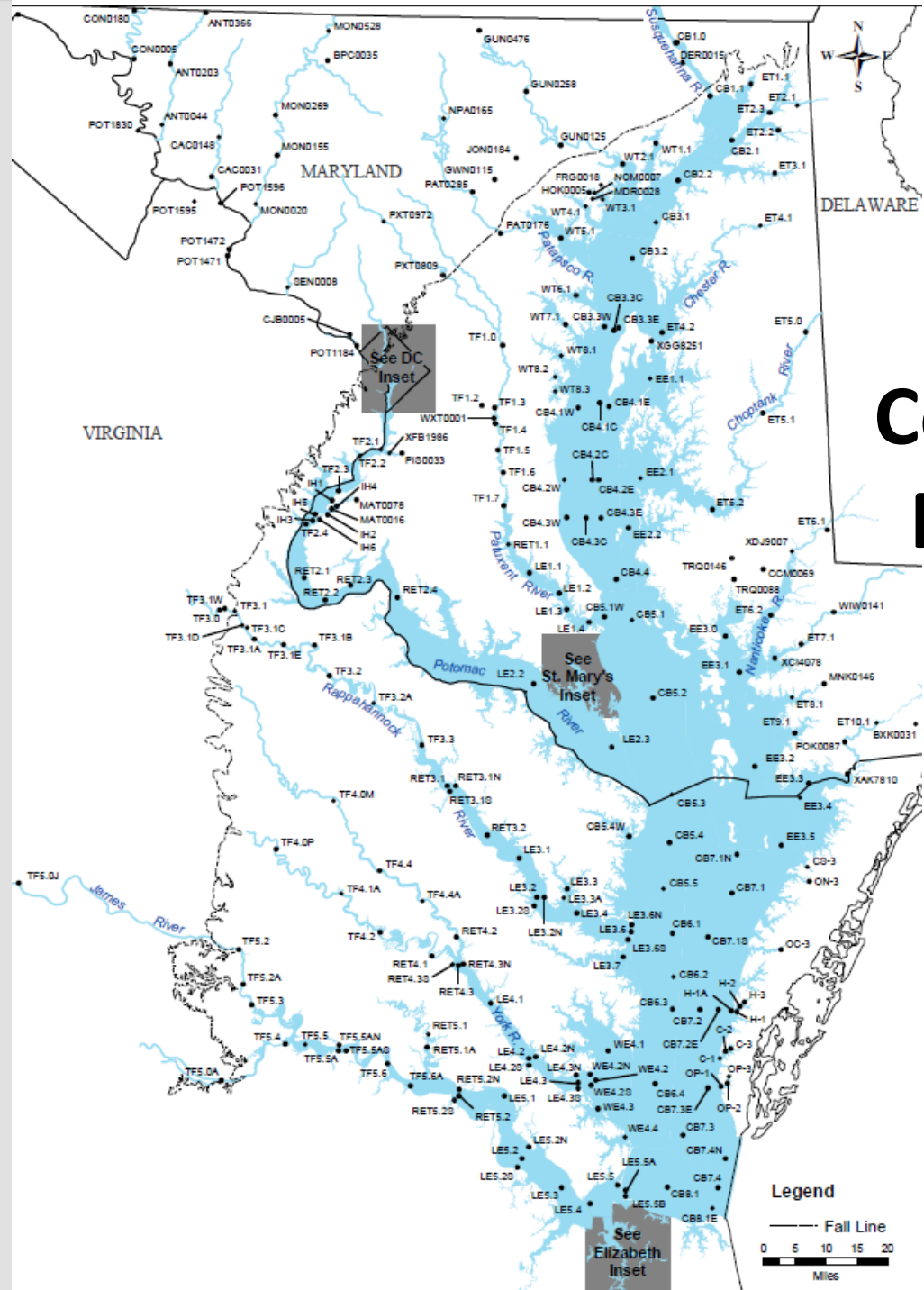
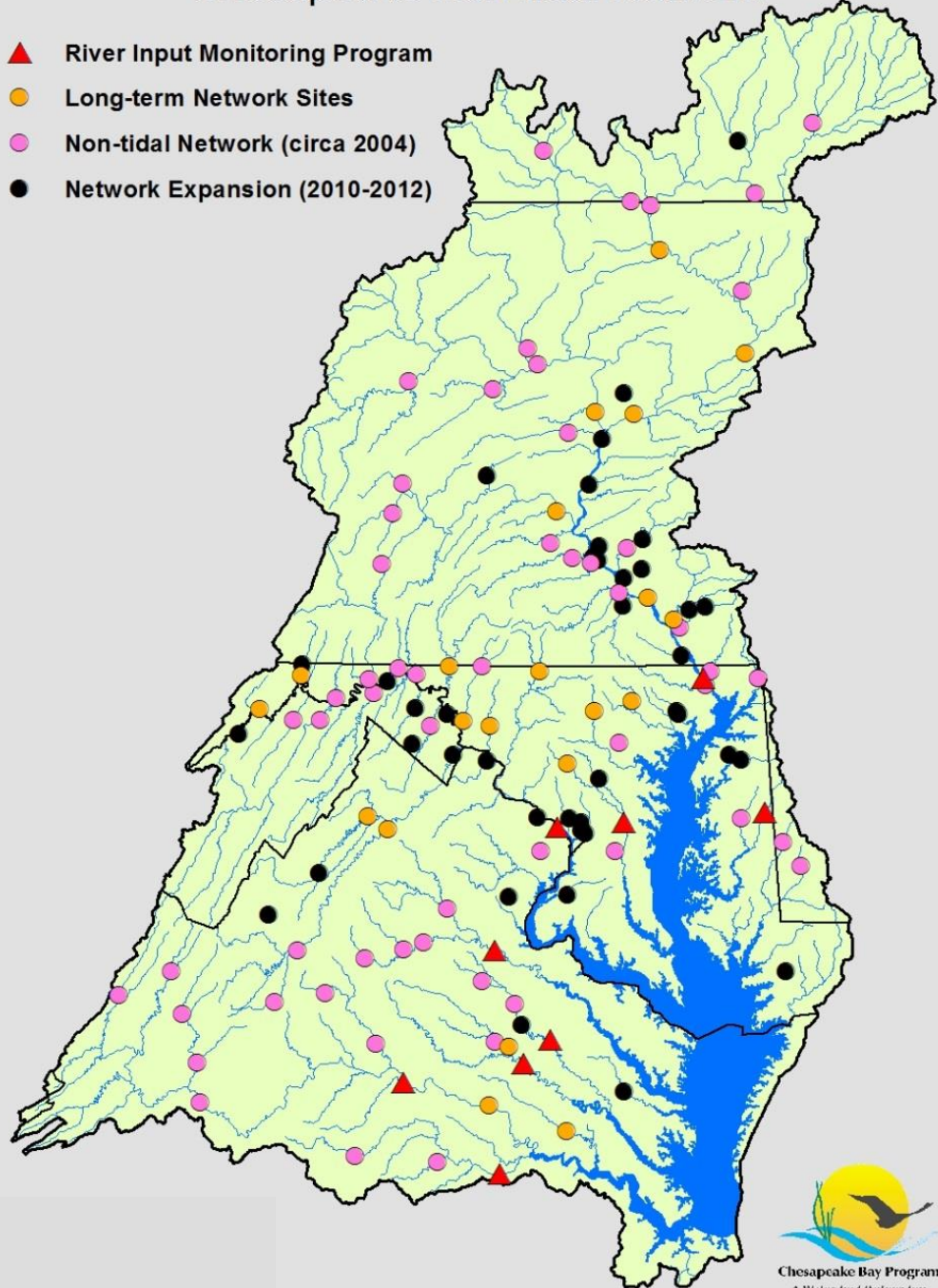
Chesapeake Bay Program, Associate Director for Science, Analysis and Implementation. Instrumental in designing Chesapeake Bay Program's extensive cooperative approach to meeting Bay targets.

# Set Numeric Restoration Goals and Measure Progress Towards Achievement



# Chesapeake Non-tidal Network

- ▲ River Input Monitoring Program
- Long-term Network Sites
- Non-tidal Network (circa 2004)
- Network Expansion (2010-2012)



**Build  
Collaborative  
Monitoring  
Networks**

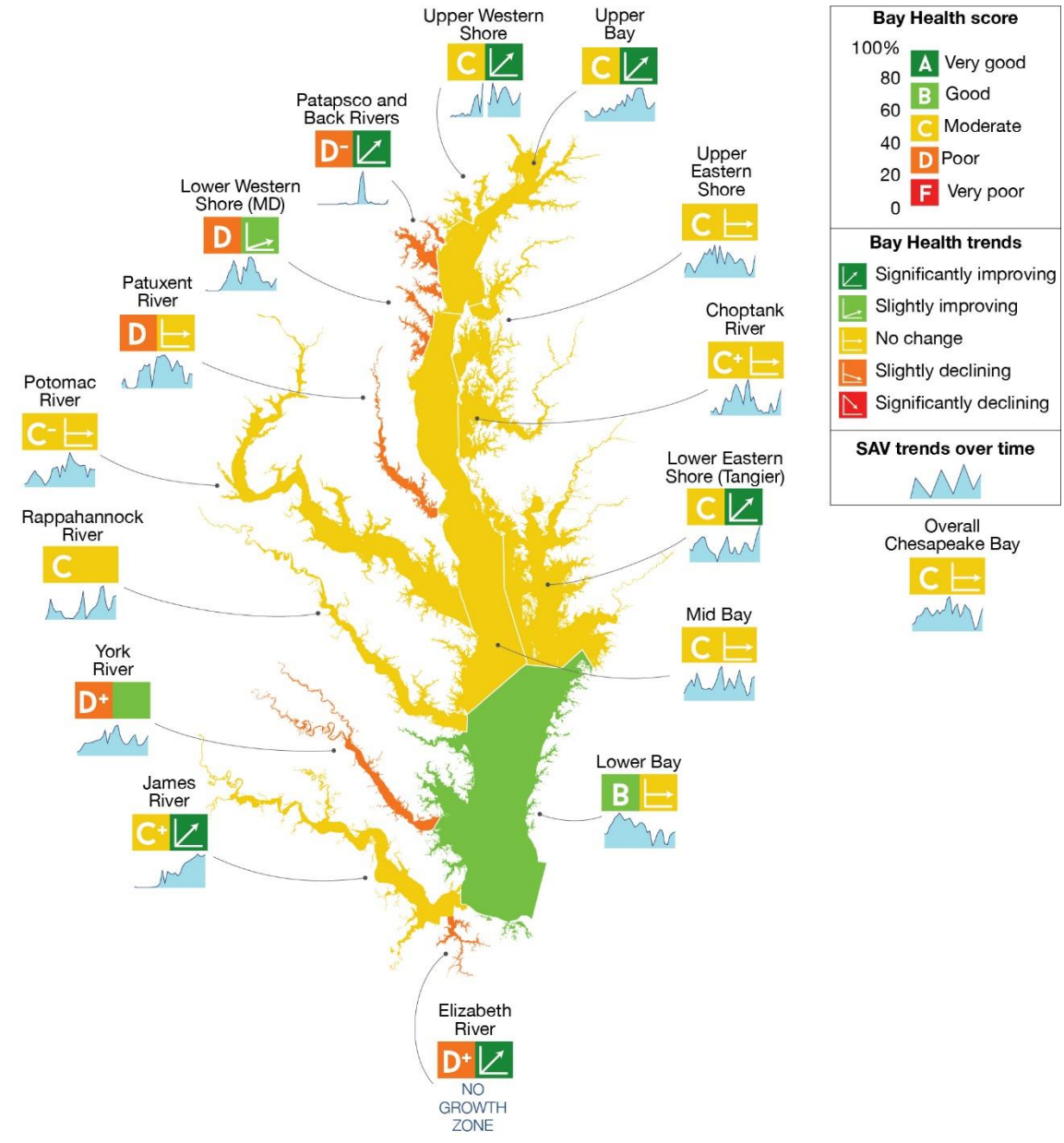
**Legend**

— Fall Line

0 5 10 15 20  
Miles

# Keep the Public Regularly Informed on Progress Towards Goals

Year	Old Tampa Bay	Hillsborough Bay	Middle Tampa Bay	Lower Tampa Bay
1975	Red	Red	Red	Green
1976	Red	Red	Red	Yellow
1977	Red	Red	Red	Red
1978	Red	Red	Red	Yellow
1979	Red	Red	Red	Red
1980	Red	Red	Red	Red
1981	Red	Red	Red	Red
1982	Red	Red	Red	Red
1983	Red	Yellow	Red	Red
1984	Red	Green	Red	Yellow
1985	Red	Red	Red	Yellow
1986	Red	Yellow	Red	Green
1987	Red	Yellow	Red	Green
1988	Yellow	Green	Yellow	Green
1989	Red	Yellow	Red	Yellow
1990	Red	Green	Red	Yellow
1991	Green	Yellow	Yellow	Yellow
1992	Yellow	Green	Yellow	Yellow
1993	Yellow	Green	Yellow	Yellow
1994	Yellow	Yellow	Red	Red
1995	Red	Yellow	Red	Yellow
1996	Yellow	Green	Yellow	Green
1997	Yellow	Green	Red	Yellow
1998	Red	Red	Red	Red
1999	Yellow	Green	Yellow	Yellow
2000	Green	Green	Yellow	Yellow
2001	Yellow	Green	Yellow	Yellow
2002	Yellow	Green	Green	Green
2003	Red	Yellow	Green	Yellow
2004	Red	Green	Green	Yellow
2005	Green	Green	Yellow	Yellow
2006	Green	Green	Green	Green
2007	Green	Green	Green	Green
2008	Yellow	Green	Green	Yellow
2009	Yellow	Yellow	Green	Green
2010	Green	Green	Green	Green
2011	Red	Green	Yellow	Green
2012	Green	Green	Green	Green
2013	Green	Green	Green	Green
2014	Green	Green	Green	Green
2015	Yellow	Green	Yellow	Green
2016	Yellow	Green	Green	Green
2017	Yellow	Green	Green	Green



# Support Inclusive Management Structure for Consensus Decision Making

- Ensure the management structure directly reflects the Partnership's Goals, Objectives and Mission
- Institutionalize an independent retroactive and proactive advisory role for the Scientific Community

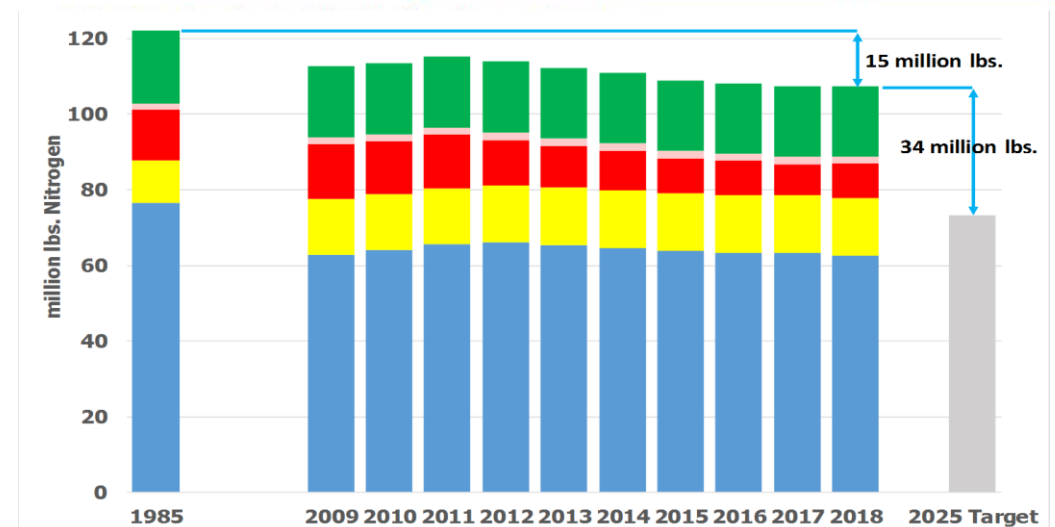


# Conduct Regular Re-assessments of Goals and Progress and Make Needed Course Adjustments

- Commit to a system of public accountability
- Hold partners accountable to their share of achieving goals

2018 Oversight Status

	Agriculture	Urban/Suburban	Wastewater	Trading/Offsets
Delaware	Enhanced Oversight	Ongoing Oversight	Ongoing Oversight	Ongoing Oversight
District of Columbia	Not Applicable	Ongoing Oversight	Ongoing Oversight	Ongoing Oversight
Maryland	Ongoing Oversight	Enhanced Oversight	Ongoing Oversight	Ongoing Oversight
New York	Ongoing Oversight	Ongoing Oversight	Enhanced Oversight	Ongoing Oversight
Pennsylvania	Backstop Action Levels	Backstop Action Levels	Ongoing Oversight	Enhanced Oversight
Virginia	Ongoing Oversight	Ongoing Oversight	Ongoing Oversight	Ongoing Oversight
West Virginia	Ongoing Oversight	Ongoing Oversight	Ongoing Oversight	Ongoing Oversight



# Successful roles that NEPs play in their study areas: Turning small budgets and unique roles into Big Impacts

- **Facilitate:** defining community-based, scientifically-sound measurable goals and objectives
- **Convene:** partners, agencies, communities, general public
- **Synthesize:** monitoring data, projects conducted in the watershed, progress towards goals
- **'Honest broker':** unbiased source of scientific information, non-partisan
- **Community engagement:** links science, management and policy with the public
- **Education and outreach:** partners and the community



Thank you!

And please reach out to us with any follow-up comments, questions, ideas, concerns

Holly ([hgreening@coastwisepartners.org](mailto:hgreening@coastwisepartners.org))

Rich ([richbatiuk@gmail.com](mailto:richbatiuk@gmail.com))



# 2023 Steering Committee Meetings

- Second Thursday of March, June, September, December
- In-person is strong preference (2 in RI, 2 in MA)
  - EC to remain all virtual
- 4-hours, 10am-2pm w/lunch
- If you cannot attend or must arrive late/leave early please do your best to send an alternate
- **Thoughts?**

## Committee Member Updates (30 minutes)

*What role could/should NBEP play that is it not already playing in the region?*

**Public Comment / Break  
(5 minutes)**

# FY2021 Funds Re-Budget

- \$1.78M was shifted from NEIWPC to RWU in October 2021
- Region 1 requested that NBEP reduce the balance of unencumbered FY2021 funds
- Concept of splitting these funds 50/50 between personnel and new subawards was introduced to this committee in March and many project ideas (mostly habitat planning) were captured through September
- \$443K left-over as of 12/9/22

# FY2021 Funds Re-Budget

- Staff propose the following:
  1. Seek Steering Committee and EPA approval to re-budget \$443K of unencumbered funds—\$218K for personnel costs and \$225K for habitat/access planning subawards.
  2. Use an RFP to subaward funds because there are too many viable projects to just pick a few for direct awards.
  3. Up the total funds available in the RFP to \$675K by adding \$450K in Year 2 BIL funds already awarded to NBEP and already approved Workplan for CCMP-consistent projects via an RFP.
  4. Release RFP the first quarter of calendar 2023.



## Decision #2

Does the Steering Committee approve the proposed re-budget of unencumbered FY2021 funds called out as Item 1 in the previous slide?

# Steering Committee Appointments

- NBEP bylaws empower a Nominating Subcommittee to meet annually to consider new members and reappointments to the Steering Committee
- Subcommittee made up of Walt Galloway, Sue Kiernan, and Kate Michaud met on October 24<sup>th</sup> to consider
  - Reappointing 9 members whose terms were expiring in 2022
  - Not reappointing 4 existing members
  - Two replacements
  - Two new members
  - Two new officers
- On November 9<sup>th</sup> the Executive Committee sent the slate of members on the next slide to the Steering Committee for consideration today
- Subsequent to this meeting, Regina confirmed that Caitlin Chaffee and Dave Monti are interested in serving as the new Chair and Vice Chair, respectively

# Proposed 2022 Appointments

Member	Organization	Status	Notes	Decision
Catalina Martinez	NOAA	Reappointment	<ul style="list-style-type: none"> <li>Has attended very few meetings</li> <li>Would like to join DEIJ work</li> </ul>	<p><b>Do not reappoint</b></p> <p>Shift to DEIJ Subcommittee</p>
Eric Boettger	NRCS	Reappointment	<ul style="list-style-type: none"> <li>Has attended very few meetings</li> <li>No response to inquiry about continuing</li> </ul>	<p><b>Do not reappoint</b></p>
Andrea Coates	MADOT	Reappointment	<ul style="list-style-type: none"> <li>Has attended very few meetings</li> <li>Decided she is too busy to continue</li> </ul>	<p><b>Do not reappoint</b></p>
Heidi Ricci	Mass Audubon	Reappointment	<ul style="list-style-type: none"> <li>Would like to be reappointed</li> </ul>	<p>Reappoint</p>
Caitlin Chaffee	NBNERR	Reappointment	<ul style="list-style-type: none"> <li>Would like to be reappointed</li> </ul>	<p><b>Reappoint and Elect as Chair</b></p>
Walt Galloway	Public	Reappointment	<ul style="list-style-type: none"> <li>Would like to be reappointed</li> </ul>	<p>Reappoint</p>
Sue Kiernan	RIDEM	Reappointment	<ul style="list-style-type: none"> <li>Would like to be reappointed</li> </ul>	<p>Reappoint</p>
Kate Michaud	Warren, RI	Reappointment	<ul style="list-style-type: none"> <li>Would like to be reappointed</li> </ul>	<p>Reappoint</p>
Rachel Calabro	RIDOH	Reappointment	<ul style="list-style-type: none"> <li>Would like to be reappointed</li> </ul>	<p>Reappoint</p>
John O'Brien	TNC	Reappointment	<ul style="list-style-type: none"> <li>Would like to be reappointed</li> </ul>	<p>Reappoint</p>
Nate Vinhateiro	URI	Reappointment	<ul style="list-style-type: none"> <li>Would like to be reappointed</li> </ul>	<p>Reappoint</p>
Donna Williams	Blackstone Coalition	Reappointment	<ul style="list-style-type: none"> <li>Would like to be reappointed</li> </ul>	<p>Reappoint</p>
Shaun O'Rourke	RIIB	Consider other	<ul style="list-style-type: none"> <li>Moved to VT</li> </ul>	<p><b>Remove from committee</b></p>
Joe Callahan	Taunton River Watershed	Consider other	<ul style="list-style-type: none"> <li>Has attended very few meetings</li> <li>Suggested replacement from Board</li> </ul>	<p>Keep Joe Callahan for now, add Steve Silva as back-up</p>
Gina DeMarco	Northern RI RCD	Consider other	<ul style="list-style-type: none"> <li>Has taken new job at District</li> <li>Suggested replace with District Manager</li> </ul>	<p>Appoint Molly Allard</p>
Dave Monti	Saltwater Anglers	Consider officer	<ul style="list-style-type: none"> <li>Expressed willingness to be Vice Chair</li> </ul>	<p><b>Elect as Vice Chair</b></p>
Walter Berry	Public	New	<ul style="list-style-type: none"> <li>Serving as new liaison to RI Rivers Council</li> </ul>	<p>Appoint Walter Berry as new member</p>

## Decision #3

Does the Steering Committee approve the proposed slate of Steering Committee members and officers?

# Intern Needs Exercise

- NBEP has budgeted \$15K for RWU interns and \$8K for interns from other schools
- Interns can work with NBEP in Providence or on-site with committee members and other partners
- NBEP funding one RWU student to support RWU faculty microplastics research
- Do you have a need? We want to help!
- Take the next 10 minutes to share at least one idea (what they'll do, where sit, who to call) on the Google Slide link below and pasted in the Chat

<https://docs.google.com/presentation/d/1LLrZnV9nyvU7xaSKw-FsNm9ckKdYKbs9s0guRxTBZJU/edit?usp=sharing>

# Quarterly NBEP Newsletter Coming Early 2023

Because you are such a fan of our quarterly program reports...



- ★ Partner Project Highlights
  - NBEP Science
- ★ 5 Questions with \_\_\_\_\_
  - Fun polls
  - Where in the Watershed (GIS Updates)
  - Narragansett Bay in the News
  - Incentives for forwarding to colleagues and friends – help us grow our audience

# Meeting Close

- Upcoming meetings
  - Executive Committee, February 14, 2023, 1-3pm via Zoom
  - Vision 2032 Subcommittee, week of February 20<sup>th</sup> 2023, 10am-4pm in-person location TBD
  - Steering Committee, March 9<sup>th</sup>, 10am-2pm in-person location TBD
- Thank you for your time this past year!





# NARRAGANSETT BAY ESTUARY PROGRAM

Steering Committee Meeting  
March 9, 2023, 10a-12:30p



# Agenda

Meeting Part	Topic	Presenter(s)	Shared via Zoom	Formal Committee Action Requested Today	Start Time
DECISIONS	Meeting Open	Caitlin Chaffee, Chair	Agenda	Approve December meeting notes.	10:00a
UPDATES	Quarterly Report	Mike Gerel, NBEP Courtney Schmidt, NBEP Mariel Sorlien, NBEP Darcy Young, NBEP	PPT	None.	10:15p
	Committee Member Updates	Committee members	None	None.	10:35p
	Public Comment / Break				10:55a
INPUT	FY2023 Workplan New Ideas	Mike Gerel, NBEP	Whiteboard	None.	11:00a
HOMEWORK	Action Items	Mike Gerel, NBEP	None	None.	12:25p

## Decision #1

Does the Steering Committee approve the  
December meeting notes?

# NBEP Quarterly Program Report

# Financials

## NBEP Financials 1.31.23

Category	Section 320 & SNEP Funds <sup>(1)</sup>				BIL <sup>(2)</sup>				Program Income Allocated <sup>(3)</sup>	Total Available			
	Budget	Total Spent	Total Encumbered <sup>(4)</sup>	Total Available To Spend	Budget	Total Spent	Total Encumbered <sup>(4)</sup>	Total Available To Spend		Budget	Total Spent	Total Encumbered <sup>(4)</sup>	Total Available to Spend <sup>(5)</sup>
Salary	\$860,038	\$368,904	\$368,904	\$491,134	\$0	\$0	\$0	\$0		\$860,038	\$368,904	\$368,904	\$491,134
Fringe	\$278,259	\$76,463	\$76,463	\$201,796	\$0	\$0	\$0	\$0		\$278,259	\$76,463	\$76,463	\$201,796
Travel	\$13,175	\$6,045	\$6,045	\$7,130	\$0	\$0	\$0	\$0		\$13,175	\$6,045	\$6,045	\$7,130
Office Supplies	\$7,254	\$8,721	\$8,721	-\$1,467	\$0	\$0	\$0	\$0		\$7,254	\$8,721	\$8,721	-\$1,467
Contracts	\$116,200	\$17,300	\$35,638	\$80,562	\$0	\$0	\$0	\$0		\$116,200	\$17,300	\$35,638	\$80,562
Subawards	\$1,309,942	\$154,854	\$1,084,996	\$224,946	\$1,819,600	\$8,100	\$909,800	\$909,800		\$3,129,542	\$162,954	\$1,994,796	\$1,134,746
Meals	\$8,160	\$4,681	\$4,681	\$3,479	\$0	\$0	\$0	\$0		\$8,160	\$4,681	\$4,681	\$3,479
Event Hosting	\$2,400	\$3,912	\$3,912	-\$1,512	\$0	\$0	\$0	\$0	\$1,600	\$4,000	\$5,512	\$5,512	\$88
Prof Development	\$4,515	\$207	\$207	\$4,308	\$0	\$0	\$0	\$0		\$4,515	\$207	\$207	\$4,308
Phone	\$11,128	\$6,710	\$6,710	\$4,418	\$0	\$0	\$0	\$0		\$11,128	\$6,710	\$6,710	\$4,418
Printing	\$5,479	\$264	\$264	\$5,215	\$0	\$0	\$0	\$0		\$5,479	\$264	\$264	\$5,215
Advertising	\$200	\$0	\$0	\$200	\$0	\$0	\$0	\$0		\$200	\$0	\$0	\$200
Registration Fees	\$1,250	\$1,672	\$1,672	-\$422	\$0	\$0	\$0	\$0	\$900	\$2,150	\$2,572	\$2,572	\$478
<b>Total Direct</b>	<b>\$2,618,000</b>	<b>\$649,733</b>	<b>\$1,598,213</b>	<b>\$1,019,787</b>	<b>\$1,819,600</b>	<b>\$8,100</b>	<b>\$909,800</b>	<b>\$909,800</b>		<b>\$4,440,100</b>	<b>\$660,333</b>	<b>\$2,510,513</b>	<b>\$1,932,087</b>
<b>Indirect</b>	<b>\$169,151</b>	<b>\$70,924</b>	<b>\$70,924</b>	<b>\$98,227</b>	<b>\$0</b>	<b>\$0</b>	<b>\$0</b>	<b>\$0</b>		<b>\$169,151</b>	<b>\$70,924</b>	<b>\$70,924</b>	<b>\$98,227</b>
<b>Total</b>	<b>\$2,787,151</b>	<b>\$720,657</b>	<b>\$1,669,137</b>	<b>\$1,118,014</b>	<b>\$1,819,600</b>	<b>\$8,100</b>	<b>\$909,800</b>	<b>\$909,800</b>	<b>\$2,500</b>	<b>\$4,609,251</b>	<b>\$731,257</b>	<b>\$2,581,437</b>	<b>\$2,030,314</b>

(1) Includes all Section 320 and SNEP monies awarded to RWU/NBEP for EPA years FY2021 and FY2022. This **DOES NOT include** FY2023 Section 320 (\$850K) and SNEP (\$250K) funding totalling ~\$1.1M expected by October 1, 2023.

(2) Includes all BIL monies awarded to RWU/NBEP for EPA years FY2022 and FY2023.

(3) This is \$2,500 provided to RWU/NBEP by URI as a sponsor of our 2022 Annual Science Event.

(4) Total Encumbered includes all funds that have been obligated to a specific external party via our workplan and/or formal agreement. These funds may not have been fully spent yet, but are not available for other purposes.

(5) Salary and fringe is available to cover 15 months of personnel time moving forward. We expect to have 7+ months worth left in the bank at the end of the fiscal year on 9/30/23. We also expect to spend down the contract budget to pay for Vision 2032 consultants, partner stipends, and non-RWU interns. The 1.1M available in subawards will be encumbered via the already approved \$675K RFP for this spring and via a second ~\$460K RFP in late calendar 2023.

# Status of 23 Existing Subawards

Project	Short Project Description	Location	Source	Award*	Balance	Current Status
Audubon Society of RI	Test low-cost monitoring of green infrastructure projects in Roger Williams Park and across Providence.	Providence, RI	SNEP 2021	\$73,000	\$47,976	Finished field work for the season and now compiling and analyzing data; coordinating training related to project.
Town of Barrington, RI	Complete stormwater drainage system geodatabase to identify opportunities to retrofit existing or install new green infrastructure.	Barrington, RI	SNEP 2021	\$33,700	\$28,058	Started analyzing data for completeness; prepping for spring data collection.
Town of Bristol, RI	Develop 10% concept designs for up to three green infrastructure projects in the Sowams and Annawamscutt neighborhoods.	Bristol, RI	SNEP 2021	\$70,818	\$70,818	QAPP submitted to EPA for review/approval.
Clark University	Work with municipal decision-makers in Woonsocket and Worcester to create conditions for installation of nature-based solutions.	Blackstone Watershed, RI/MA	SNEP 2021	\$25,000	\$25,000	Developed avenues for student/researcher participation; held training sessions to broaden participation.
City of East Providence, RI	Develop conceptual plans for stormwater management in Runnins River watershed, including design and permitting for 1 green infrastrucure practice.	East Providence, RI	SNEP 2021	\$45,000	\$45,000	Choosing BMP locations and completing QAPP.
Groundwork RI	Advance renderings of green infrastructure projects at the south end of Blackstone Boulevard to 75% design and public engagement stage.	Providence, RI	SNEP 2021	\$92,039	\$81,732	Completed QAPP and held stakeholder engagement meetings.
NBNERR	Complete conceptual designs, plans, costs, and permitting for at least 4 green infrastructure practices on reserve property.	Prudence Island, RI	§320 2021	\$50,015	\$50,015	Developing scope of work and contacting potential landscaping firms.
Southern RI Conservation Dist	Complete designs, permitting, and outreach for 4 private sites that builds on existing engineering designs for Green Hill Pond watershed.	Westerly, RI	SNEP 2021	\$75,000	\$5,694	Finished work and awaiting final report.
Town of South Kingstown, RI	Complete designs, permitting, and outreach for 4 private sites that builds on existing engineering designs for Green Hill Pond watershed.	South Kingstown, RI	§320 2021	\$99,000	\$99,000	Expecting January QR in March; finalizing site selection for GI projects prior to permit submittal and public outreach.
Woonasquatucket River Watershed Council	Engage engineers and residents to create effective, community-supported 30% designs for green infrastructure on Salmon Avenue.	Providence, RI	SNEP 2021	\$60,410	\$57,544	Held a press event to celebrate opening of bike path access at Salmon St; pivoting to work on new site due to Salmon St site ownership change.
Blackstone River Watershed Council	Purchase safety equipment for educational events, host events, compensate community members for expertise, complete one-on-one outreach.	Central Falls to Pawtucket, RI	§320 2021	\$10,000	\$4,067	Purchased safety equipment, printed educational materials and supplies, and paid community members for participation in 2 events.
RI School of Design	Organize paddle down Blackstone River, develop posters and outreach materials highlighting key issues on the river, develop publication on efforts	Blackstone Watershed, RI/MA	§320 2021	\$15,000	\$4,808	Revised scope and no-cost extension approved use remaining funds to two events and publication through 10/31/23.
Boston University	Advancing FEK work from 2020, will create a database of drift seaweed (species, location, biomass, and C/N conc) collected by fishermen and scientists to increase our understanding of changing conditions in Narragansett	Narragansett Bay, RI/MA	§320 2021	\$110,954	\$110,954	QAPP under development, initial meetings with RIDEM and fisherman. Potential to dovetail with existing TNC and RIDEM survey work.
NBNERR	Complete the planning and design phases of a sediment placement project to improve the resilience of Succotash Marsh.	South Kingstown, RI	SNEP 2022	\$200,000	\$200,000	Finalizing an agreemnt with URI EDC for elevation surveys, bathymetry, and other data colleciton to inform design; QAPP nearly done.
Clark University	Support the opaacity of the Blackstone Watershed Collaborative for FY23.	Blackstone Watershed, RI/MA	§320 '21/SNEP '22	\$100,000	\$100,000	First QR expected 4/10/23.
Environmental Council of RI / REJC	Advance 6 projects in Green Justice Zones per the 2020 Providence <a href="#">Climate Justice Plan</a> in the Providence Port and Olneyville neighborhoods.	Providence, RI	BIL 2022	\$100,000	\$100,000	Contracting on hold pending ECRI work with consultant to set administrative policies that will allow them to accept federal funds.
SRPEDD	Support for circuit rider to provide technical support for 10 projects in municipalities lacking sufficient capacity for project development.	Taunton River Watershed, MA	BIL 2022	\$100,000	\$100,000	First QR expected 4/10/23.
Old Colony Planning Council	Develop 6 projects in partnership with municipalites in the Upper Taunton River Watershed who are short capacity.	Brockton to Plymouth, MA	BIL 2022	\$75,000	\$67,132	Advanced projects a total of 7 steps. Developed 3 proposals for drinking water, vulnerability, and brownfields. Helped with NBS workshop series.
Groundwork Southcoast	Provide capacity funding to cultivate 6 projects in a new Fall River's Resilience District.	Fall River, MA	BIL 2022	\$85,000	\$85,000	First QR expected 4/10/23.
Save The Bay	Develop capacity to develop 10 habitat restoration/adapation projects in Narragansett Bay watershed.	NBEP study area in RI/MA/CT	BIL 2022	\$100,002	\$100,002	Have hired one new staff partially paid for via this subaward.
Wood-Pawcatuck Watershed Association	Devfelop a cold water stream restoration plan for the upper Wood-Pawcatuck watershed and construct at least 1 restoration project.	Wood-Pawcatuck Watershed, RI	BIL 2022	\$134,800	\$134,800	First QR expected 4/10/23.
Nature Conservancy of RI	Complete fish passage planning and design work for the four lower dams along the Blackstone River, RI	Valley Falls to Pawtucket, RI	BIL 2022	\$300,000	\$300,000	Contracts in place with Fuss & O'Neil to get Main St and Slaters Mill dams through permitting and Elizabeth Webbing and Valley Falls to alternatives; kick-off meetings and subsurface investigations soon.
Blackstone River Watershed Council	Build new knowledge and connections with the BIPOC community to advance recommendations in the Blackstone Needs Assessment. Support water quality testing to raise awareness of ongoing issues that restrict recreational use.	Central Falls to Pawtucket, RI	BIL 2022	\$15,000	\$6,650	Conducted pilot educational events with Narragansett Tribe; leveraged this work to submit a \$75k proposal to the United Way to expand educational work with the tribe. Participated in water quality testing.
*§25,000 green infratsructure award to Groundwork Southcoast has been completed.				<b>\$1,969,798</b>	\$1,824,250	



- CoastWise Partners conversations with 17 SC members and others in February
  - Thank you!
  - Will circulate CoastWise “findings” report with invite to next meeting
- Next meeting April 12, 2023 10am-2pm @ RIDEM
  - “Goals, Roles, and Stories”
  - Last meeting before we release first draft!
- Next steps this winter and spring
  - Staff creating Draft Action Plans and completing action-specific outreach
  - Hire writers and designer and map out stories and document format
- Looking to complete in January 2024

Plan Structure		
Plan Part	Audience	Includes...
Story	Public	5 linked “feature” stories by environmental authors w/beautiful design that open selected chapters of plan & that are suitable for separate publication. “Illustrate the macro in the micro”
Action Plans	Partnership	39 2-page Action Plans
Appendices	EPA	“Box-checks”—Comparison to 2012 CCMP, Climate Vulnerability Assessment Table, etc.



# SNEP Network Funding Events



## Funding Nature Based Community Resilience in Southeastern Massachusetts

- Webinar held 2/15, in-person networking event this Monday, 3/13 10am - 12pm

## Funding Water Quality Restoration and Climate Resilience Projects in Rhode Island

- Webinar on Wednesday, 3/15 10am – 12pm

POLITICS

### Rural communities want to tap federal funding. But it's hard to know where to start

The USDA has hired people to help small communities tap the complex web of programs for money they need to address big problems. But that help is only available in select areas.

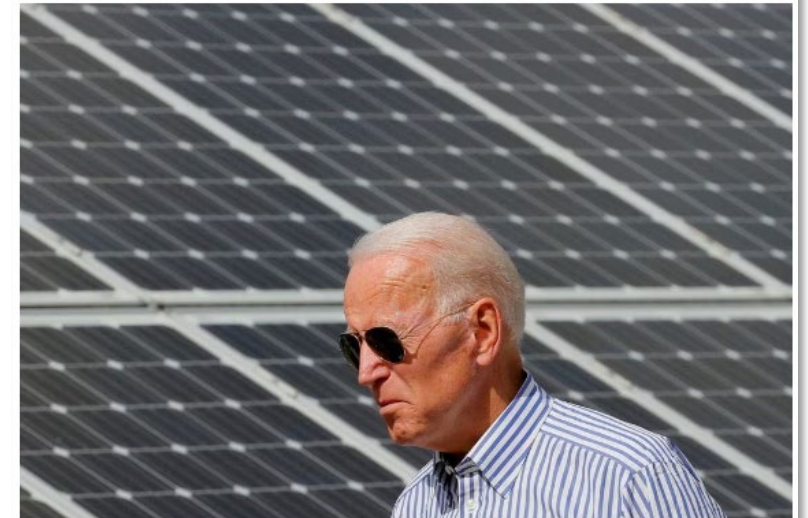
▶ LISTEN · 3:53 + PLAYLIST <> ☰



Evan Vucci/AP

## U.S. EPA unveils \$550 mln in environmental justice grants

By Valerie Volcovici



Joe Biden walks past solar panels while touring the Plymouth Area Renewable Energy Initiative in Plymouth, New Hampshire, U.S., June 4, 2019. REUTERS/Brian Snyder

WASHINGTON, Feb 23 (Reuters) - President Joe Biden's administration announced on Thursday it will select 11 organizations across the United States to administer \$550 million in grants to disadvantaged communities for reducing legacy pollution and gaining access to clean energy.

# Interns

NBEP can support 4-5 interns per year. Our current budget supports 3 RWU interns (these are students of RWU) and 2 contract interns (from outside RWU).

Interns are paid \$15 or \$20 per hour depending on education level.



Intern	Mentor(s)	Project Summary	Start Date	End Date
Ethan Howard	Lilian Jeznach (RWU)	Develop a plastic monitoring procedures for rivers and streams	10/31/22	5/31/23
Nathan Silveira	Pamela Judge & Ahmet Akosman (RWU)	Develop soil erosion control mesh using 3D printed mesh made of soy-based ink	3/6/23	12/20/23
Erica Meier	Caitlin Chaffee (NBNERR)	Develop communication strategy and outreach materials for NBNERR	3/6/23	8/30/23
TBD*	Joel Singley (RWS)	Research the impacts of habitat and water quality change with removal of Kickemuit dam	TBD	TBD

\*interviewing interns in the next few weeks




# Social Science Working Group

# Social Science Update

- Convened working group in 2021
- Created a matrix of social science indicators to pursue including
  - Public access\*
  - Resilient municipalities\*
  - Public health\*
  - Watershed economy
- \*are indicators NBEP is starting to work on now

**2023**  
Social Science Indicators  
for the Narragansett Bay Estuary Program

Narragansett Bay, Little Narragansett Bay,  
Coastal Salt Ponds



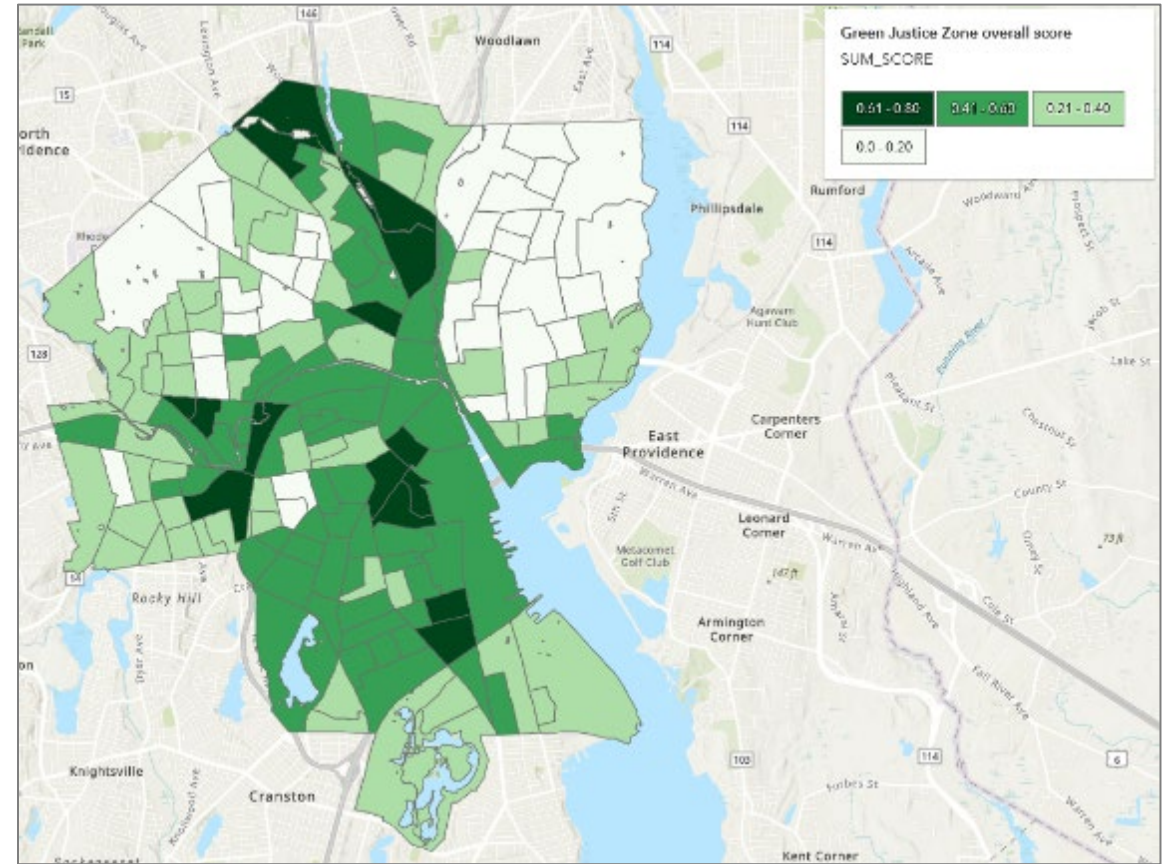
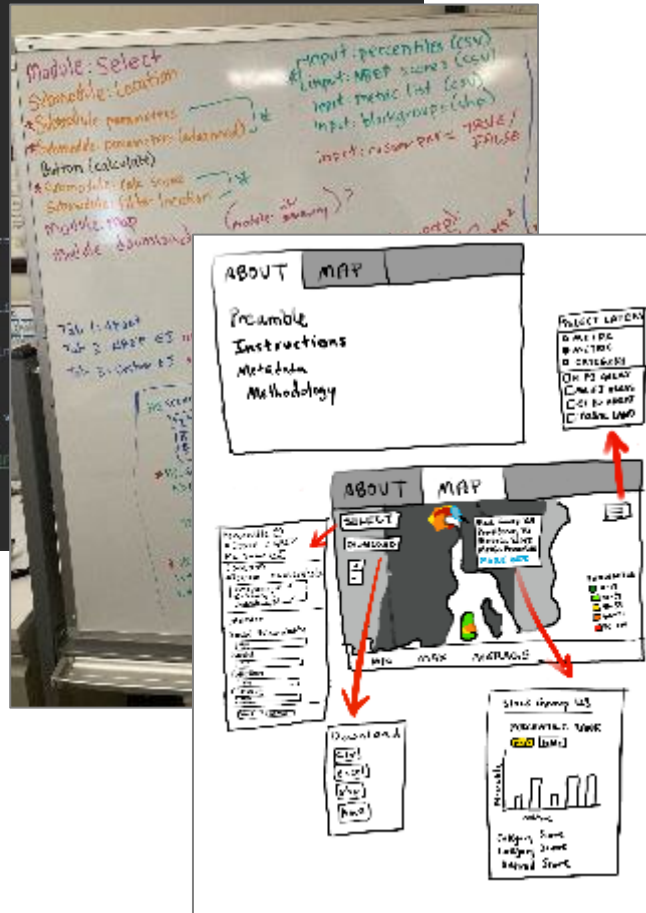
**NARRAGANSETT BAY  
ESTUARY PROGRAM**

Indicator	Criteria	Scale of data	Objective Information		Subjective Info Subjectivity*	Tasks	Actions		
			Limitations/Caveats	Status/Gaps			Who	When	
Public Access	Number of access points/spaces	Town, state, watershed, study area	Currently only know shoreline, saltwater access points. RI has location of parks.	Need to know parks (MA & CT), river access, RI beaches	Quality can be subjective; need to define with metrics that we have or can be quantified	Define point/space for PI/SW beaches, parks, river access, shoreline access.	NBEP	Comprehensive	
	Space user Demographics. Travel time to points/space		Known for popular shoreline activities (FPA/NREP study)	Need to expand to other points/spaces		Need to know walking, car, bus travel times			Use telephone data (or other data) to determine
	Quality of access points/spaces		Most data pertaining to quality is water or habitat quality, not other measures of quality	Need to expand datasets to other points/spaces					Define travel time and start/end points
Resilient Municipalities	Participation in resiliency programs (e.g., MVR, MRP, CRCA, etc.)	Town-level only; could scale to state level	Limited by program funding, town capacity, and town eligibility	Known by the groups administering the programs, could be cataloged for study area	This indicator could be a comparison of "haves" and "have-nots."	Use Impaired Waters list, beach closures, Toxic Release Inventory, Park Scores.	NBEP or Partners (could be done by interns)	Database of information on how towns have considered preparing for or are implementing plans to be resilient with a changing climate	
	Has resilience plan/manager (or similar)		Limited by town capacity	Need to define "plan" and need to know if towns have them		Could towns be categorized/ranked by external factor (like population or median income)?			Collect information from the internet for all towns in study area
	Implementing Resiliency (or similar) Plan		Limited by town capacity	Need to define "implementing" and how towns are doing this					
Public Health	Location of heat islands	Census block, town, state, watershed, study areas	Need to think through how to decrease heat islands; could looking at tree cover help?	Need to know for the study area	Will be very focused on urban areas	Map heat islands and tree cover. Incorporate into EJ Tool	NBEP	Comprehensive database of public health threats with GIS bytown	
	Location of flood risk		Current information (STORMtools) only covers sea level rise	Need to know for rainfall, sea level rise, storm surge, and river flooding		Will highlight socioeconomic differences if mapped with EJ tool			Map flood risk from sea level rise, storms, and rivers. Track number of people displaced by flooding
Watershed Economy	Employment and revenue supported by natural resources	State scale, watershed, study areas	"Natural resources" is a broad category	Known from a 2019 US report (limited areas)	These metrics will paint an incomplete picture. With proper caveats, that may be OK for our purposes	Update 2019 report and conduct a literature review for additional materials	Hire Consultant	Start of an economic review for watershed or Vision 2032	
	Investments in watershed restoration & preservation		Expand on 2019 US report. Use NERPT (National Estuary Program Online Reporting Tool), which is only populated with data NBEP receives from partners	Need more information from partners to use NERPT		Incorporate into EJ Tool			Collect data from NFERPT

\*These indicators can be very subjective in nature. For example, what is "good" or "healthy" therefore, we are trying to be as objective as possible. This category highlights some major areas of subjectivity that may pose down results or create confusion.  
\*\*Who refers to who can/will complete the tasks.

# Providence EJ Tool

```
92 a -----  
93 a Run Script ---  
94  
95 print('\nReading in csv data')  
96 print('\nTracts')  
97 df_tracts = pd.read_csv(tracts_csv,  
98                        sep=',',  
99                        na_values='NoData')  
100  
101 print('\nColumn List')  
102 df_cols = pd.read_csv(col_names_csv,  
103                       sep=',')  
104  
105 print('\nDropping extra rows')  
106 if full_watershed_is_false:  
107     print('\nFor tracts')  
108     # Must be in state, town  
109     df_tracts = df_tracts[df_tracts.State ==  
110                          'RI']  
111     print('\nFor column list')  
112     # Must be in var_list  
113     df_cols = df_cols[df_cols.VAR_COL.IsIn(var_list)]  
114  
115 print('\nDropping extra columns') # Must be in  
116 print('\nFor tracts')  
117 # Create List of percentile columns  
118 percentile_list = [col_prefix + x for x in  
119                   range(1, 100, 10)]  
120 # Concatenate List of desired col  
121 col_list = ['TR', 'State', 'Town', 'ACSTOTPOP'] +  
122            percentile_list  
123 # Drop extra columns  
124 df_tracts = df_tracts[col_list]
```



# Blackstone Water Quality Data Tool

```

348 ['SourceYear', 'TEXT', 'SourceYear', 28, ""2023; 2022; 2012""],
349 ['NBEPYear', 'TEXT', 'NBEPYear', 18, ""2023""],
350 ['Study Area', 'TEXT', 'Study Area', 58, ""Narragansett Bay Watershed""],
351 ['Basin', 'TEXT', 'Basin', 50, ""Blackstone River""],
352 })
353
354
355 print('\tCalculate fields')
356 arcpy.CalculateFields_management(blackstone_final, "PYTHON3",
357 [[['DataSource', 'MID, MassGIS, RIGIS'],
358 ['SourceYear', '2023, 2022, 2012'],
359 ['NBEPYear', '2023'],
360 ['Study Area', 'Narragansett Bay Watershed'],
361 ]])
362
363
364
365
366
367
368
369
370
371
372
373
374
375
376
377
378
379
380
381
382
383
384
385
386
387
388
389
390
391
392
393
394
395
396
397
398
399
400
401
402
403
404
405
406
407
408
409
410
411
412
413
414
415
416
417
418
419
420
421
422
423
424
425
426
427
428
429
430
431
432
433
434
435
436
437
438

```

## Blackstone River Coalition Water Quality Data

Map Report Card Graphs Download Data

**Select Data**

**Select Location**

Select Watershed

Select Town

**Select Watersheds**

Abbott Run, Branch River, Chey

**Select Sampling Locations**

Albion Road, Auburn High Schc

**Select Parameter**

Dissolved Oxygen

**Select Year**

2019

**Legend**

- Excellent
- Good
- ▲ Fair
- ◆ Poor
- ⊗ No Data

Table 1: Blackstone River Report Card (2019)

Site	Town	Watershed	Parameter	Score
Albion Road	Oxford, RI	Potomac River-Blackstone River	Conductivity	No Data
Albion Road	Oxford, RI	Potomac River-Blackstone River	Dissolved Oxy Saturation	Good
Albion Road	Oxford, RI	Potomac River-Blackstone River	Dissolved Oxygen	Excellent
Albion Road	Oxford, RI	Potomac River-Blackstone River	E. coli	No Data
Albion Road	Oxford, RI	Potomac River-Blackstone River	Nitrate	Fair
Albion Road	Oxford, RI	Potomac River-Blackstone River	Orthophosphate	Poor
Albion Road	Oxford, RI	Potomac River-Blackstone River	Turbidity	Fair
Albion Road	Oxford, RI	Potomac River-Blackstone River	Water Depth	No Data
Albion Road	Oxford, RI	Potomac River-Blackstone River	Water Temperature	Excellent
Auburn High School	Auburn, MA	Kettle Book	Conductivity	No Data
Auburn High School	Auburn, MA	Kettle Book	Dissolved Oxy Saturation	Good
Auburn High School	Auburn, MA	Kettle Book	Dissolved Oxygen	Excellent
Auburn High School	Auburn, MA	Kettle Book	E. coli	No Data
Auburn High School	Auburn, MA	Kettle Book	Nitrate	Excellent
Auburn High School	Auburn, MA	Kettle Book	Orthophosphate	Poor

# Outreach Highlights

12/19: RWU Law School re: partnering opportunities	2/6, 2/27: SNEP Steering Committee re: research projects
12/20: SNEP Network conservation development webinar	2/7, 2/16: City of Providence re: EJ tool
12/21: CT and NY Sea Grant LISS Review Panel	2/7: Vision 2032 Story and Design Team kick-off
1/4: NBEP officers and Executive Director re: meeting design	2/9: SNEP Ecosystems Services Subcommittee
1/5-3/8: SNEP Network Taunton Funding Workshop	2/15: RI Housing Works re: anti-dislocation/gentrification policy
1/5: SNEP Justice 40 Initiative Follow-up	2/15: Practical Tools for Collaborative Decision Making webinar
1/9: NBEP-EPA Program Evaluation Kick-Off	2/16: NOAA Southern New England Marine Debris Action Plan meeting
1/11: Saginaw MI Large Landscape Restoration re: lessons learned	2/16: URI Storms and Effects of Seal-Level Rise in New England project webinar
1/11, 3/8: RI Rivers Council	2/17: City of Providence re: Public Street access project
1/13, 3/2: Long Pond project planning	2/17: Blackstone Watershed Collaborative
1/13: Regional Seagrass re: LI to ME seeding idea	2/18: URI MESM re: mentoring, internships
1/17: TRWA visit re: intern/financial support opportunities	2/21-2/23: Coastwise Partners visit re: Vision 2032
1/18, 2/15: ANEP External Affairs re: communications deliverables	2/23: RI Habitat Trust Fund Review Panel
1/19: Senator Whitehouse RI staff re: introduce NBEP to new staff	2/24: URI plastics re: planned conference at URI
1/20: RI informal seagrass group re: RI eelgrass status opportunities	2/24: RWU economics: re Blue Economy Event
1/23: University of S. Maine re: climate resilience projects	2/27: RIEAA Facilitator Training
1/25: RIDEM re: trash/plastics ideas	3/1: NBNERR re: biodiversity event, funding support
1/25: STB re: Bay goals and accountability	3/1: SNEP Balancing Housing Needs with Clean Water webinar
1/27: Boston Harbor Now re: partnering	3/2: Inaugural RIDEM/TNC Fisheries Team Meeting
1/30: Rising Waters re: climate/SLR art installation	3/3: RI Water Resources Center Advisory Council
2/1. 2/23: ANEP Directors re: March DC meeting	3/6: RWU re: algae/seaweed work
2/1: RI Sea Grant: Subseafloor Hydrogeology: Moving Beyond Watershed	3/6: STB re: Little Narragansett Bay assessment/report card
2/1: URI Hack4Oceans event	3/7: RINHS re: biodiversity event
2/2: URI re: Bay models	3/8: RIDEM DMF re: biodiversity event

# Busy March–June

- V2032 Contracting, Writing, Meeting
- Program Evaluation
- Science Advisory Committee meeting
- Habitat planning RFP
- 2023 §320/SNEP Workplan and Budget
- BIL Spending Plan
- BIL EJ Plan/Tool
- Committee meetings



# Committee Member Updates (20 minutes)

**Public Comment / Break  
(5 minutes)**

# NBEP Workplan Exercise (85 minutes)



# FY2023 §320/SNEP Workplan

- NBEP expects to receive \$1.1M from EPA by October 1, 2023
  - \$850K from §320 and \$250K from SNEP
  - This is in addition to the budget shared earlier
- Don't expect workplan to change much from FY2022
- Each year we consider adding a ideas (new hire, new tasks or subawards) that fit our niche
- Have roughly \$400K to play with
- Darcy will next lead an exercise to take ideas and rough costs, seek further detail on ideas offered, and then identify those with the most support
  - We have seeded the pot with some ideas from staff and committee members

Idea	Estimated cost	Who will do it
Revise <a href="#">RI Stormwater Design Manual</a> building on work of SNEP network including climate considerations. Maybe joint with MA DEP?	\$200,000	RIDEM, possibly with MA DEP
Watershed Economy indicator data gathering. Answer the question "how employment, revenue, and investments impact the study area."	Unknown	TBD
Hire more NBEP staff to help with projects from small/low-capacity orgs, such as on public access and data sharing.	Unknown	NBEP hires staff
Develop a traveling program for K-12 students that you can educate on the watershed and career paths in water.	\$50,000	TBD
Salt marsh (and other habitat?) assessment and monitoring database creation and management.	Unknown	TBD
Conservation/preservation of land	Unknown	TBD
Hire a contract grant writer that could support organizations that don't have the capacity to apply for larger funding opportunities.	\$50,000	NBEP contract(s)
Stormwater / retention pond retrofit on the Palmer River, in partnership with Save the Bay & Warren Land Trust. Replicable and simple enough to be performed by DPW staff. Pond discharges from an industrial area into a freshwater wetland and salt marsh.	\$100,000	Town of Warren, RI with Save the Bay and the Warren Land Trust
Worcester - Poor Farm Brook dam removal. City of Worcester owns the dam, which has been assessed to be in poor condition. Removal would restore cold-water stream habitat for brook trout and other wildlife.	\$50,000	TBD
Provide monitoring for the projects ourselves, and all the QA so that the data are consistent. Since we will not have to give the grant applicants money for monitoring, we will actually save money in the long run.	Unknown	TBD
Wetlands restoration projects, especially those with multiple benefits including to EJ communities. The Attleboro project is one example but I'm sure there are others.	\$200,000	TBD
Create an overall NBEP water quality monitoring data base from all of the projects that we fund.	Unknown	TBD
Expand use of <a href="#">Angler Catch app</a> , a citizen science app for recreational fishers to report valuable catch and discard data, supported by RIDEM and the RI Saltwater Anglers Association. Funding would help improve function and market to potential users.	\$40,000	NBEP subaward to RI Saltwater Anglers Association
Provide funding to support community engagement around Little Narragansett Bay and create outreach materials, such as a report card.	\$15,000	NBEP subaward(s) or contract(s)
Expand MyCoast community science flood app ( <a href="https://mycoast.org/ri">https://mycoast.org/ri</a> ) to reach more Rhode Island communities. App currently focuses on Aquidneck Island, Providence, and Bristol.	\$20,000	NBEP subaward to RI Sea Grant
Provide funding to increase staff capacity at RIDEM / TNC RI for fisheries assessment.	\$100,000	NBEP subaward to RIDEM / TNC
Provide funding to improve seagrass monitoring efforts in the Narragansett Bay region and participate in a future regional trial of seagrass seeding.	\$50,000	NBEP subaward(s)
Rhode Island biodiversity cataloging: provide funding to make needed improvements to biodiversity databases in RI and encourage their use.	\$100,000	NBEP subaward(s)
NBEP Small Outreach Grants: award small grants, \$5,000 or less apiece with minimal paperwork, to nonprofit organizations for events and education related to the NBEP mission.	\$50,000	NBEP subawards to multiple community-based nonprofits
NBEP Habitat Manager Hire: hire a new staff person at NBEP to work with partners to help coordinate and prioritize projects in the region.	\$120,000	NBEP hires staff

# Upcoming Meetings

- Vision 2032 Subcommittee, April 12<sup>th</sup> 10a-2p in-person in Providence
- Science Advisory Committee, April TBD
- Executive Committee, May 9<sup>th</sup>, 2023, 1-2:30 pm via Zoom
- Steering Committee, June 9th, 10a-1p hybrid from NBC in Providence