

BLACKSTONE SOUTH GATEWAY PROJECT



4) EXPANDED ISLAND
Rain garden with tree planting, purifying storm water from Butler av.

3) EXPANDED SOUTH PARK
Depaved and expand South Park with grassy areas, trees, shrubs and rain gardens for storm water purification

IMPROVED BIKE LANE

2) GRASS BIO SWALE
Pass through grass swale with check dams

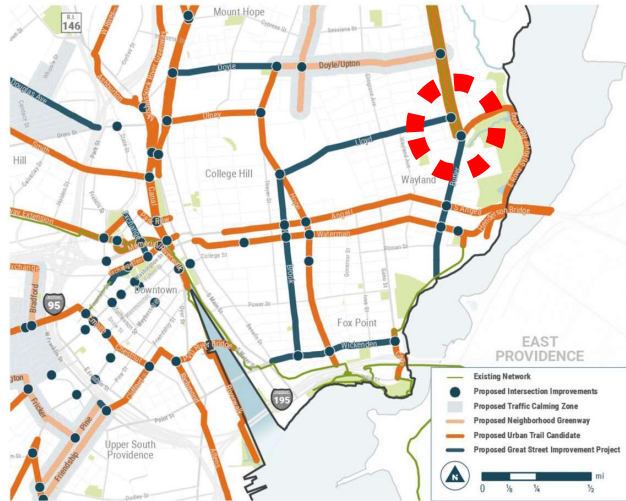
1) NEW BLACKSTONE PARK ENTRANCE
Proposed walk and stairway to the park



SEEKONK RIVER ALLIANCE



Neighborhood Map



Great Streets Plan

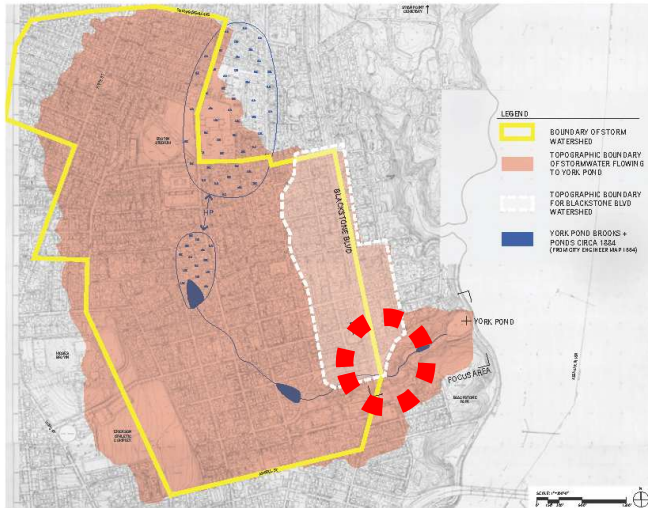
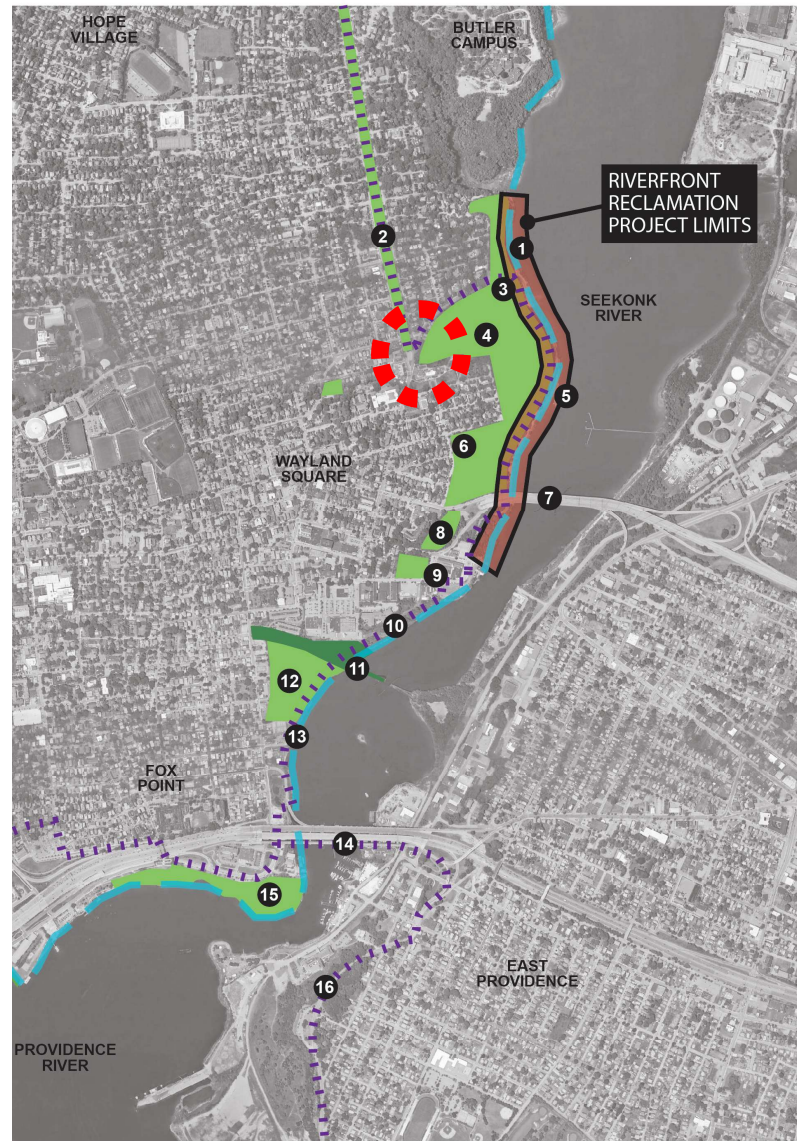


Figure 1. York Pond Storm Watershed Area Draining to the Seekonk
Source: Brown University
Watershed Limits



LEGEND

- 1 Gulf Road Kayak Launch
- 2 Blackstone Boulevard
- 3 York Pond
- 4 Blackstone Park Conservation District
- 5 Narragansett Boat Club
- 6 Patterson Park
- 7 Henderson Bridge Future Reconstruction
- 8 Waterman Street Dog Park
- 9 Richmond Square
- 10 RIDOT Off-Street Bike Path Construction Complete
- 11 Future Crook Point Bridge Restoration & Park
- 12 Gano Street Park
- 13 East Transit Boat Launch
- 14 Washington Bridge Linear Park
- 15 India Point Park
- 16 East Bay Bikepath
- 17 Statehouse
- 18 Waterplace Park
- 19 Burnside Park
- 20 Waterfront Parks & Pedestrian Bridge
- 21 City Walk
- 22 City Hall

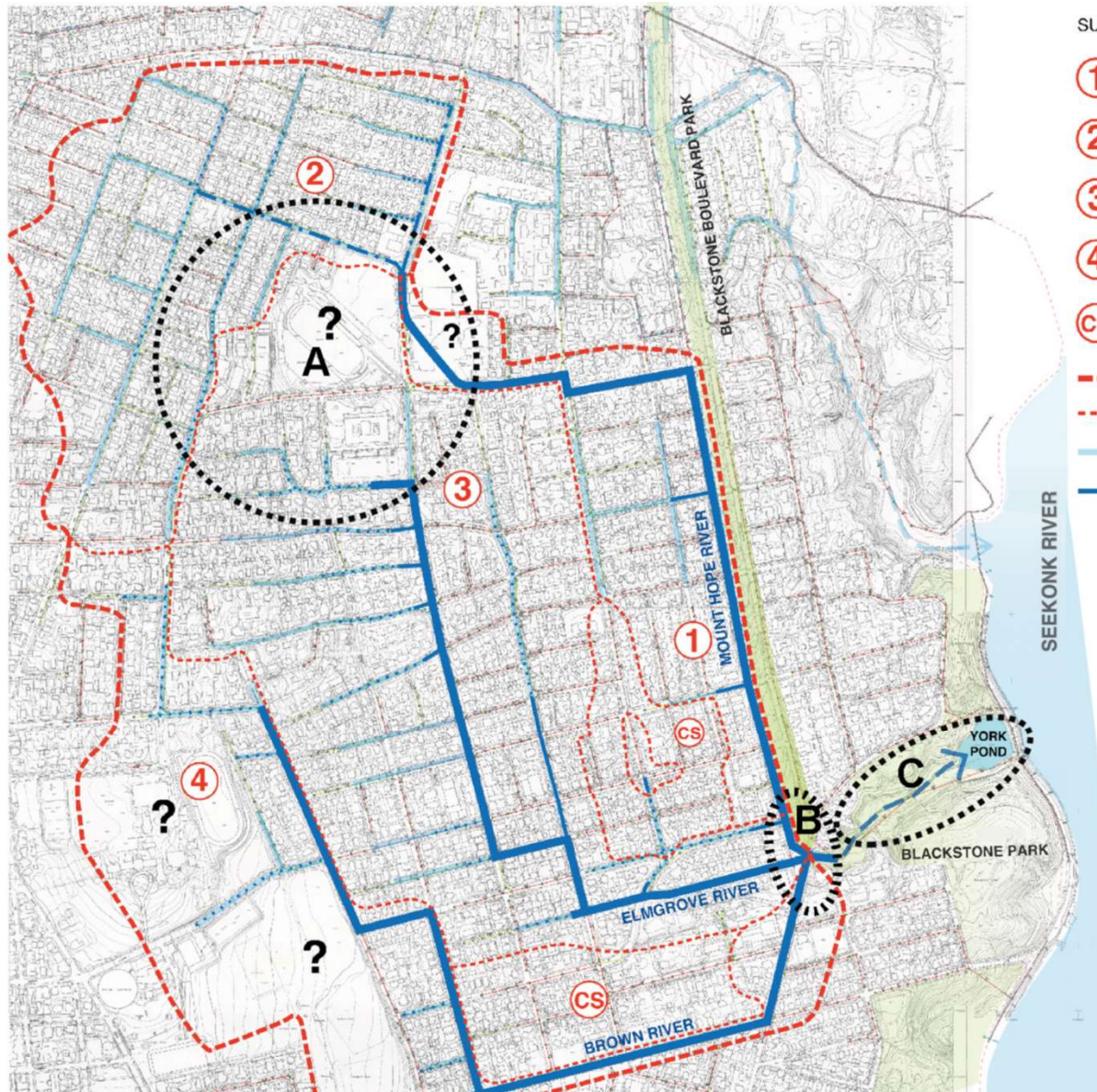
- Riverfront Reclamation Project
- Existing Public Open Space
- Future Public Open Space
- East Coast Greenway Route
- Designated Greenway (CH/Wayland/FP Neighborhood Plan)

Providence Waterfront Open Space Map

May 13, 2021
Not to Scale



YORK POND WATERSHED PROJECTS



SUBWATERSHEDS:

- ① BOULEVARD
- ② HOPE STREET
- ③ ELMGROVE
- ④ BROWN
- CS COMBINED SEWER AND STORMWATER

- WATERSHED BOUNDARY
- - - SUBWATERSHED BOUNDARY
- STORMWATER DRAINAGE LINE
- MAIN STORM DRAINAGE LINE TO YORK POND
- ? LARGER INSTITUTIONAL PROPERTY STORM DRAINAGE?
- PUBLIC PARKS

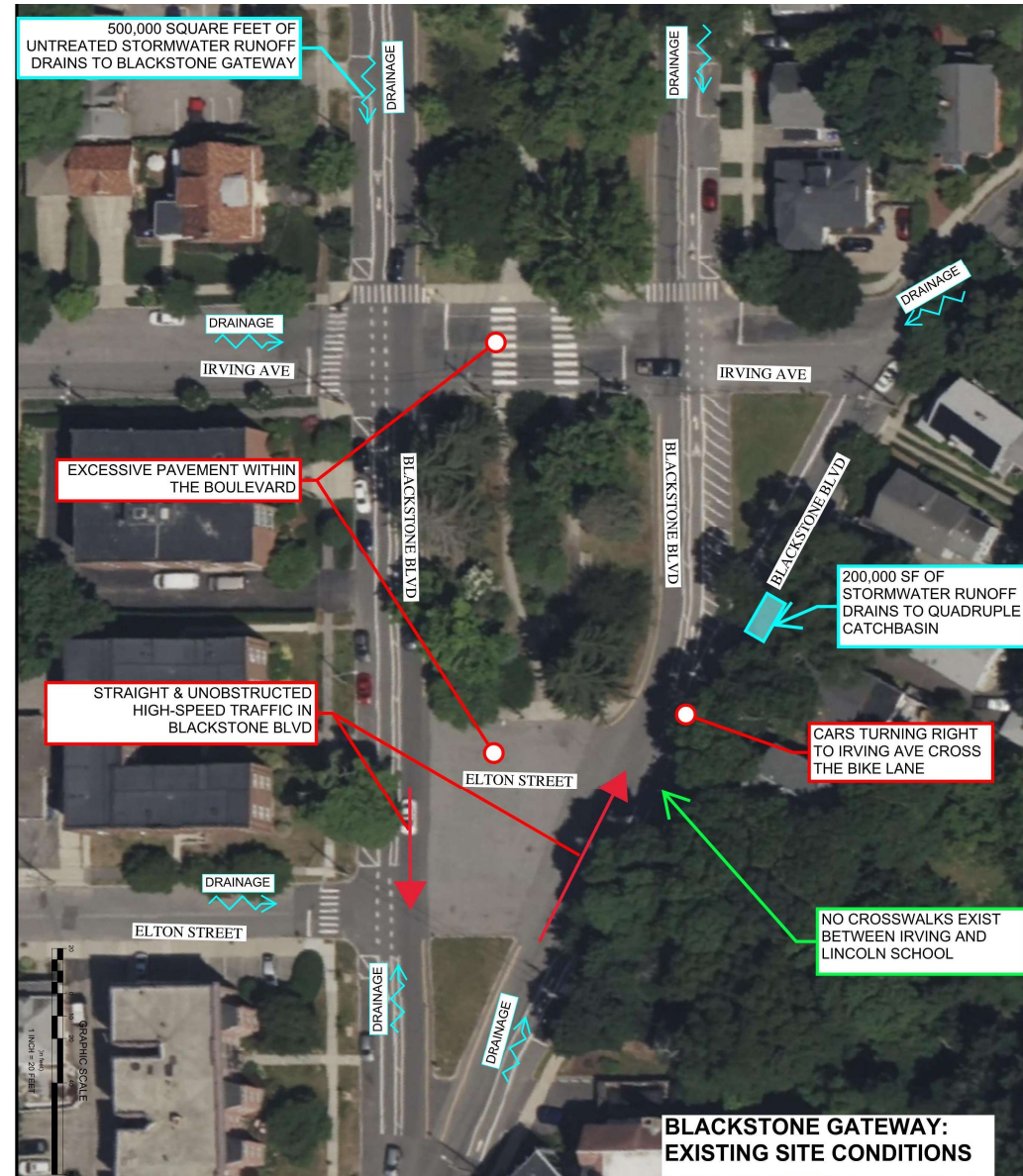
- A SNEP STUDY AREA
- B BLACKSTONE PARKS GATEWAY PROJECT
- C YORK POND RAVINE PROJECT



BLACKSTONE PARKS GATEWAY PROJECT

GOALS:

1. Slow & filter stormwater runoff
2. Improve safety
3. Enhance aesthetics & park character



**VISION:
WHAT IF?**



Existing Conditions – view from Butler Ave.

VISION: WHAT IF?

The South End of Blackstone Boulevard: Proposed Condition

This shows the paved area largely planted and configured with rain gardens to capture and infiltrate stormwater runoff. The additional greenery announces an entrance into a park-like area and calms traffic. Calmer traffic allows for the safer integration of

pedestrian and bicycle traffic along and across the boulevard. This gateway area also creates an entrance into the Blackstone Park Ravine Trail, connecting to a network of park trails and the Seekonk shoreline.



Figure 9.

BLACKSTONE BLVD SOUTH PARK

VIEW FROM BUTLER AVE.

SEARLE DESIGN GROUP, LLC

02/18/21

ENGAGEMENT



Conceptual Plan A
Blackstone Boulevard, Providence, RI
May 2023



Conceptual Plan B
Blackstone Boulevard, Providence, RI
May 2023



Conceptual Plan C
Blackstone Boulevard, Providence, RI
May 2023



SELECTED ^{DRAFT} ALTERNATIVE



HW 12.12.23
SKETCH UPDATES

Conceptual Plan
Blackstone Boulevard, Providence, RI
May 2023



SEEKONK RIVER ALLIANCE



NARRAGANSETT BAY ESTUARY PROGRAM

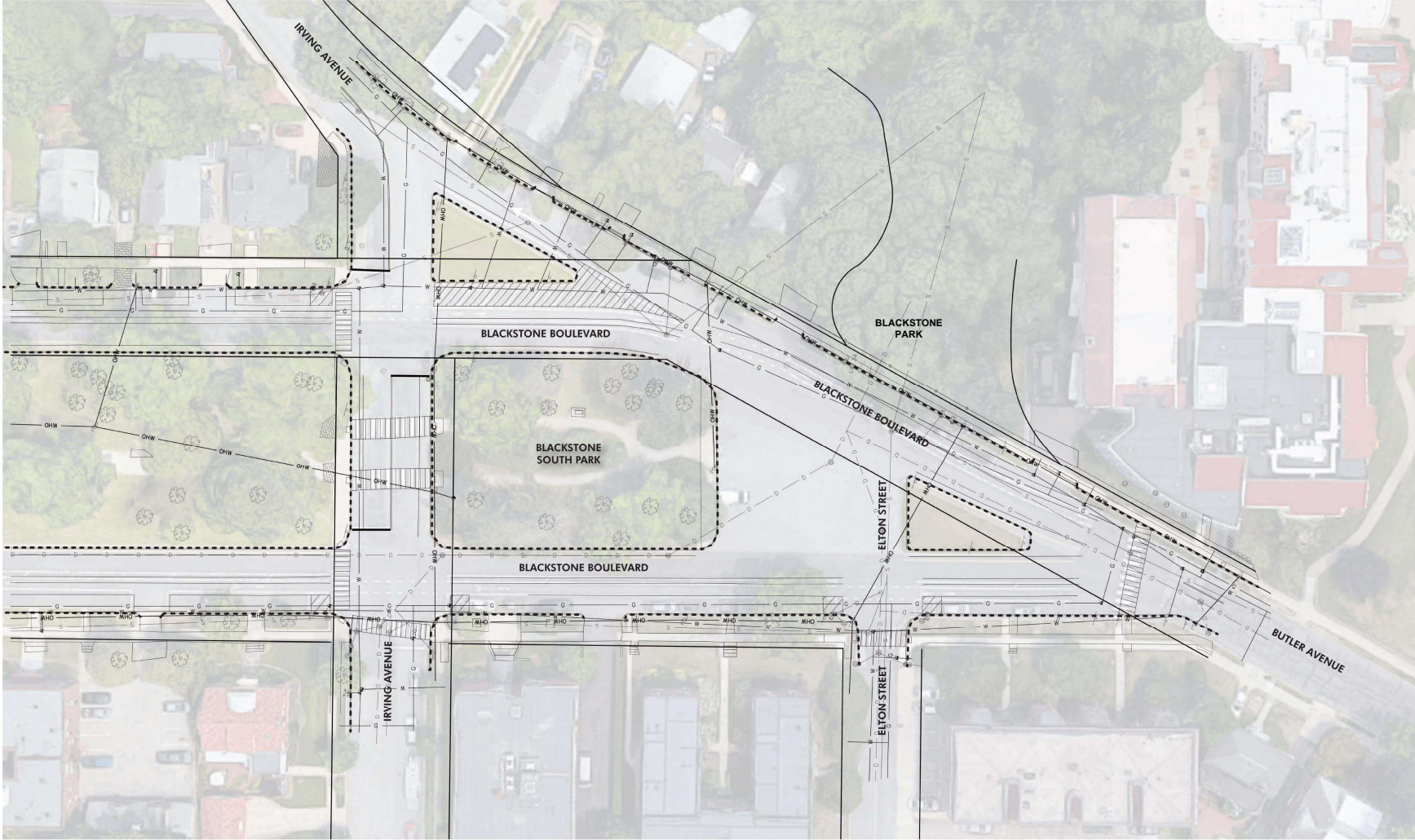
0' 20' 40'
1 INCH = 20 FEET



NEXT STEPS:

- 75% design draft – spring
- Shovel ready design
- Implementation funding
- Construction

EXISTING



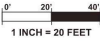
Existing Conditions
Blackstone Boulevard, Providence, RI
May 2023



SEEKONK RIVER
ALLIANCE



NARRAGANSETT BAY
ESTUARY PROGRAM



GREEN INFRASTRUCTURE

