

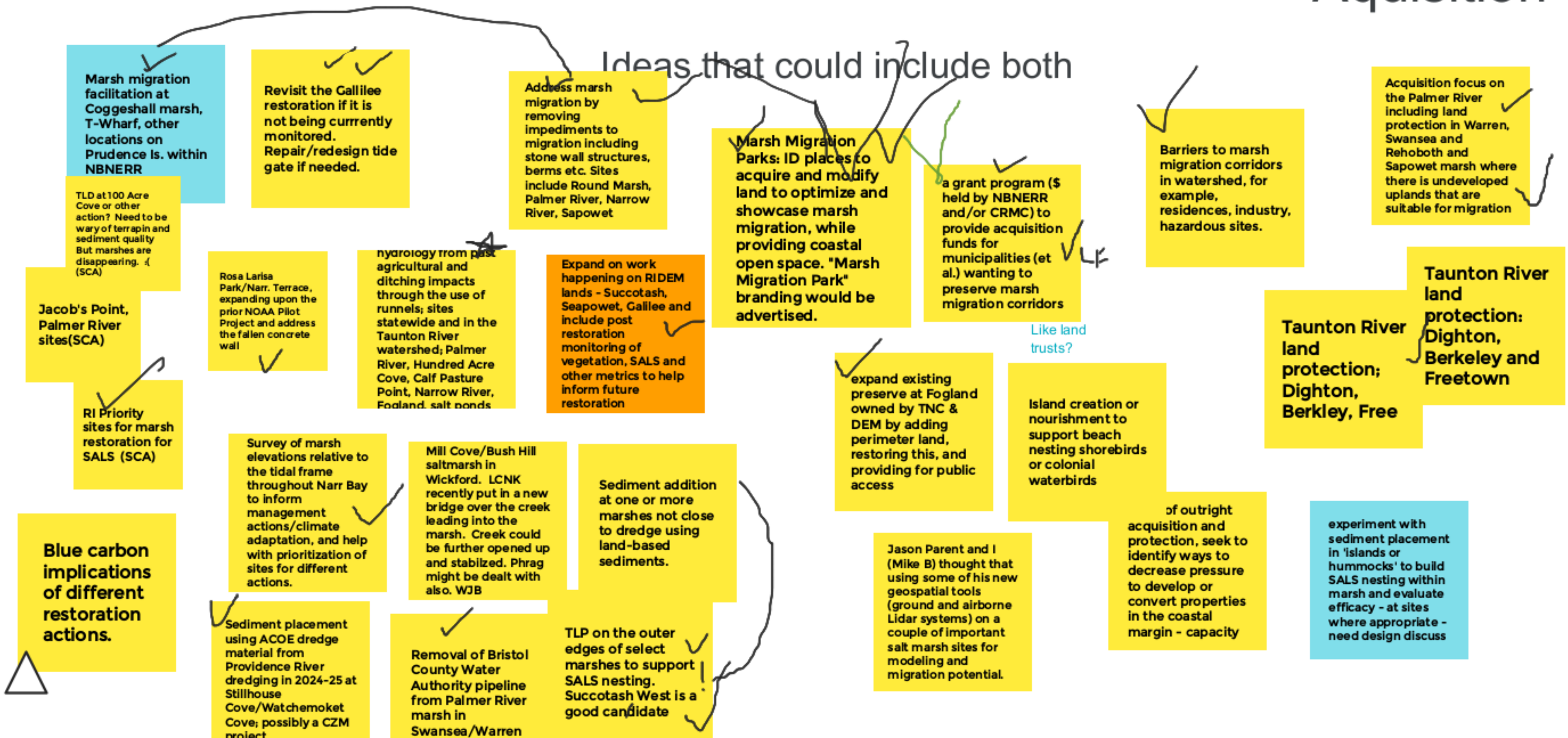
Project Ideas

Put your big ideas regardless of "ripeness"

Restoration

Aquisition

Ideas that could include both



Project Ideas

Capacity Building Needs

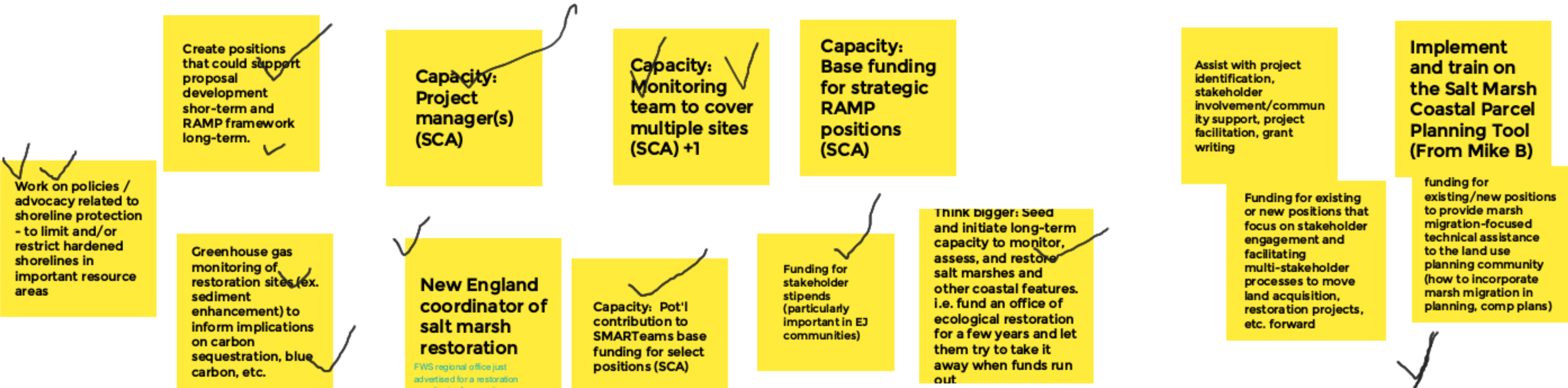
Data Management and Analysis

monitoring at regional

As per other note on historical marsh data for Narragansett Bay, we also have historic marsh data and trajectories for the ~40 embayments in the MassBays NEP (Provincetown to the NH border). Giancarlo, EPA

Partner with MRP and MVP programs to ID projects (planning through implementation and monitoring)

How should we use OCM capacity building funds (potentially up to \$250K / year)?



Work on policies / advocacy related to shoreline protection - to limit and/or restrict hardened shorelines in important resource areas

Create positions that could support proposal development short-term and RAMP framework long-term.

Capacity: Project manager(s) (SCA)

Capacity: Monitoring team to cover multiple sites (SCA) +1

Capacity: Base funding for strategic RAMP positions (SCA)

Assist with project identification, stakeholder involvement/community support, project facilitation, grant writing

Implement and train on the Salt Marsh Coastal Parcel Planning Tool (From Mike B)

Greenhouse gas monitoring of restoration sites (ex. sediment enhancement) to inform implications on carbon sequestration, blue carbon, etc.

New England coordinator of salt marsh restoration
FWS regional office just advertised for a restoration coordinator for aquatic connectivity and salt marshes to operate at 40,000 ft level.

Capacity: Pot'l contribution to SMARTeams base funding for select positions (SCA)

Funding for stakeholder stipends (particularly important in EJ communities)

THINK bigger: Seed and initiate long-term capacity to monitor, assess, and restore salt marshes and other coastal features. i.e. fund an office of ecological restoration for a few years and let them try to take it away when funds run out

Funding for existing or new positions that focus on stakeholder engagement and facilitating multi-stakeholder processes to move land acquisition, restoration projects, etc. forward

funding for existing/new positions to provide marsh migration-focused technical assistance to the land use planning community (how to incorporate marsh migration in planning, comp plans)

continue monitoring at sediment placement sites already carried out (Quonnie, Ninigret, Narrow R.)

Assist with initial project development to support future CEHRTF grants

Funding for project assistance (hire someone to help towns write the grants, implement, project manage)?

For CZM funding, project management for large-scale restoration projects i.e. sediment placement associated with ACOE dredging

Jason Parent and I (Mike B) thought that using some of his new geospatial tools (ground and airborne Lidar systems) on a couple of important salt marsh sites for modeling and migration potential.

Tech assistance: assist with RTK assessment/water level monitoring

Development of a marsh migration information repository and/or match making service for modelers/mappers to work with end users on needed/refined marsh modeling products

Planning / Tech Ideas

Projects for Other Funding Sources?

NFWF Coastal Resilience

NOAA NMFS

EPA SRF Water Quality

NBEP

Possibly RI Infrastructure Bank through the MRP Action Grant
MA too...

NRCS WRE program for land acquisition of migration corridor and if easement secured, funds also available for restoration

NBEP: Receiving >\$1m between our regular CWA money and IJA \$\$; Need to get precise amount and discuss with Steering Committee; Most likely fund more planning projects

NAWCA

match required, no monitoring funding

USFWS - Coastal Wetland Grants -for land protection - State is applicant

EPA SNEP

USFWS Fisheries Program - got some xtra infrastructure funds for fish passage - if saltmarsh projects have herring runs - would be eligible

USFWS Coastal Program

Our favorite: CRMC Habitat Restoration Trust Fund! and Ocean State Climate Adaptation Resilience fund

USFWS Partners Program

Salt Marsh Workshop Ideas

Audience

salt marsh researchers, practitioners, conservation groups

Salt marsh restoration practitioners, resource agencies from RI and MA

permit agencies and funding organizations

Salt marsh practitioners

Get coastal communities, community leaders and educators involved at some level

Permitting agencies: CRMC, RIDEM Water Quality Cert, ACOE, and ACOE federal partners, NMFS

potentially have some portion targeting policy makers that influence coastal zone management?

Objectives

Share ideas, data, visions for the future (tech transfer)

Workshop streamlining the restoration permitting process

Solidify collaboration between RI/MA and beyond (through SMARTeams)

Information sharing between MA DER, RI RAMP

Topic Ideas

Salt marsh ecology 101 - mini webinars or tutorials

Share current monitoring data and information on restoration solutions; discuss what's next; build off work from 2014 and 2018 workshops

SMARTeams: regional, multi-disciplinary support for salt marsh restoration projects of all types. (SCA)

Saltmarsh restoration best practices / project examples with a deeper dive / collaboration & discussion around best practices

Focus: how do we get projects on the ground from today (year 1) through year 10 (with or without an "official" agency)? From year 10-20?

Farmers in the marsh: the importance of legacy agricultural alterations on current marsh expression (SCA)

Site visits or virtual tours

Social at The Guild Brewery on the Warren Waterfront (99 Water St)??

Climate adaptation - what are the choices and when do you do which ones?

Discuss creation of a RI office of habitat restoration

Field tour of the Burnes Property WRE easement - freshwater wetlands, drainage ditches, marsh. Or Jacobs.

sediment placement lessons learned for RI

increasing state agency capacity for restoration

BIKE RACK

**Workshop audience:
interested agency
representatives or
municipalities**

**Workshop objective:
Create connections
with others integral
to sustaining salt
marshes (such as
municipalities, other
agencies, permit
agencies, funding
agencies)**

**As much as
possible, let's try to
address water
quality and flooding
(stormwater
management)
issues in proposed
projects**

**NOTE: NBEP has a
planning for equity
tool for the
watershed, so we can
see if a project is in an
EJ area, or can have
conversations about
restoration projects
and EJ areas**

